

INDIGENOUS ACKNOWLEDGMENT

We respectfully acknowledge the Traditional Custodians of the lands where we live and work. We acknowledge their unique ability to care for Country and deep spiritual connection to it. We honour Elders past, present and emerging whose knowledge and wisdom has and will ensure the continuation of cultures and traditional practices.

There are concepts presented within this masterplan which if adopted will require further collaboration with Wonnarua Elders to develop into an accurate and fair representation of their connection to this land and country.



MASTERPLAN

Landscape Masterplan
Tree planting
Materials
Lighting
Relocated elements
Furniture
Park planting
Detail area
Detail area elevation
Corridor elevation
Artists impression

MASTERPLAN DOCUMENT

APEX PARK

CESSNOCK CITY COUNCIL

62-78 VINCENT STREET



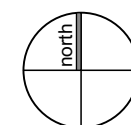
MASTERPLAN

SITE MASTERPLAN

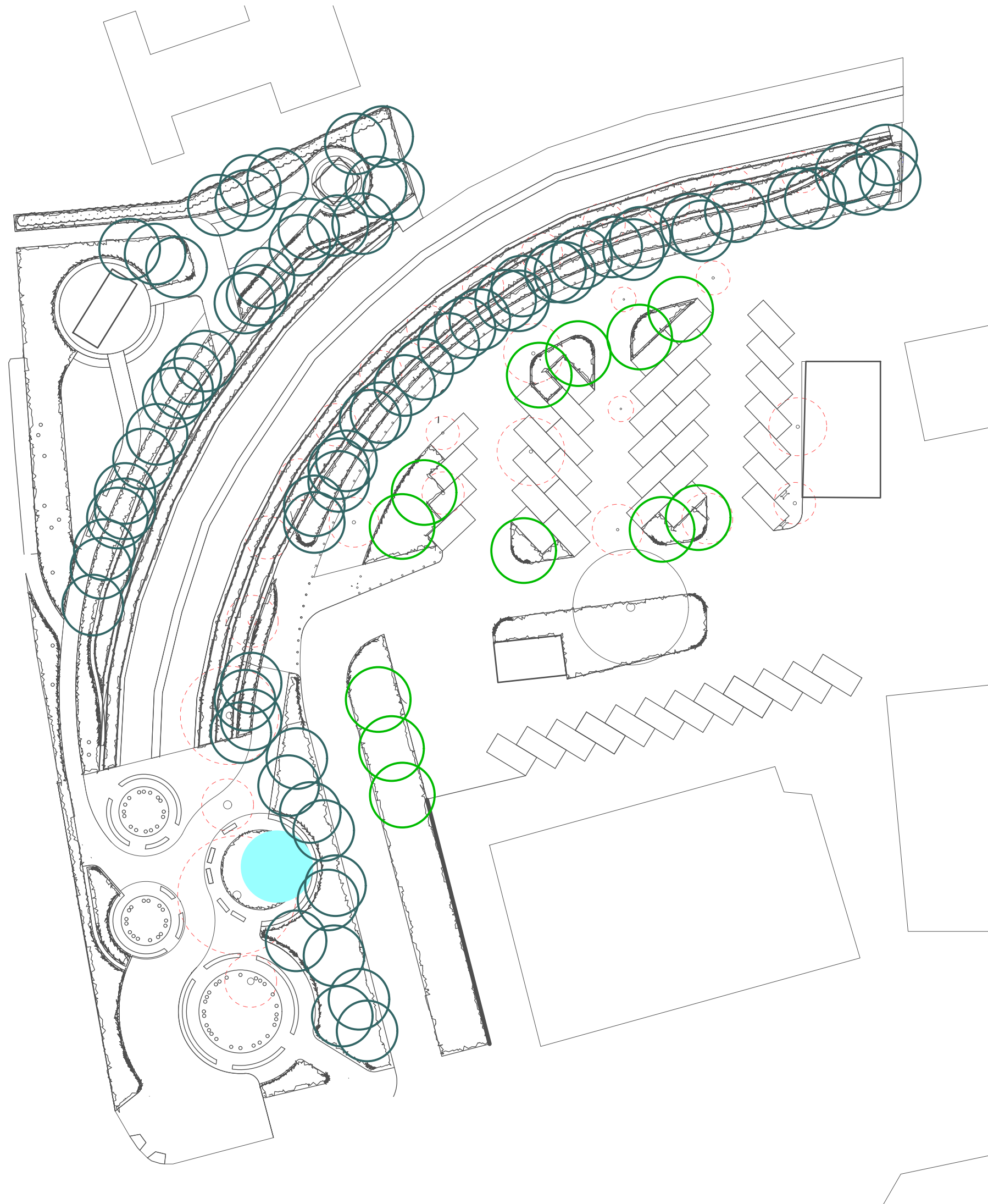


Notes

1. Provision of parking with revised layout
2. Bridge to provide pedestrian connection through space from carpark to picnic areas. Bridge aligned on entry road as a reference to a fishing net capturing movement of people along the corridor. Net like structure to provide encasing with lighting
3. New public amenities to include disabled, male and female toilet
4. Opportunity to provide gateway feature above existing channel to spark interest and be a marker within the streetscape of Cessnock. Key theme of story telling and being a "celebration" of the survival of the Wonnarua People. Uplighting to be used and use of misting element within each of the gathering spaces - refer to detail page
5. Rain garden to capture runoff from carpark
6. Stepped sandstone levels provide opportunity to green existing drainage channel and naturalise the edges
7. Vegetation to provide a vegetated barrier to road interface to restrict access
8. Canopy planting of native locally occurring species along edge of drainage channel to create green ribbon alongside the channel offering shade and habitat.
9. Planting of Eucalyptus Tereticornis (Forest Red Gum) to signify new beginnings and hope
10. Lawn provides open space for play adjacent to the corridor
11. Opportunity to upgrade existing parking adjacent to the Hotel Cessnock to ensure the space reads as a whole (needs further liaison with Hotel owner)
12. Low mass planting with large lettering to provide naming of the park
13. Space retained for hotel storage
14. Shelter provides picnic spaces buffered from the road by vegetation with low seating wall to perimeter
15. Large eel form to be etched into concrete to bottom of channel
16. Vehicle access to be retained
17. Heavy vehicle access road
18. Feature poles to be uplit at night to symbolise the Forest Red Gums which were lost from the area due to clearance for agriculture and mining creating a gateway element leading to the corner
19. Upgrade existing building to include customer service windows, a kitchenette and internal toilets to allow kiosk operations
20. New awning to side of building to create sheltered service area
21. Electric vehicle charging station provided to two vehicle parking spots



MASTERPLAN TREE PLANTING




 *Casuarina glauca*
Swamp oak



Melaleuca quinquenervia
Broad-leaved paperbark



 *Eucalyptus tereticornis*
Forest redgum



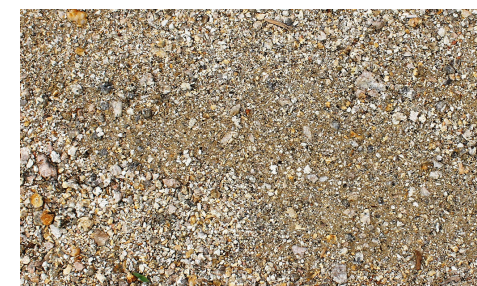
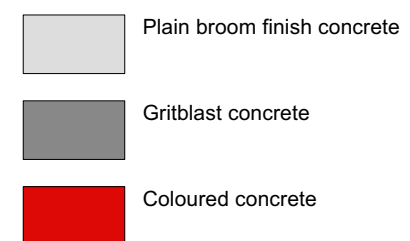
 *Tristaniopsis laurina*
Watergum

A key driver of the landscaping on site is the revegetation of the corridor with indigenous native trees to create a green ribbon through the landscape.

The Hunter River Estuary Riparian Vegetation Guide and the Hunter Bushland Resource Kit was referred to to gain an understanding of the indigenous vegetation.

MASTERPLAN

PARK MATERIALS



The Landscape Master Plan recommends concreting the carpark and providing new paths to improve circulation and access.

It is proposed to use the finish of the concrete to create patterning on the site reinforcing pedestrian movement. Feature paving of coloured concrete at key nodes are proposed to create interest and reinforce the storey telling.

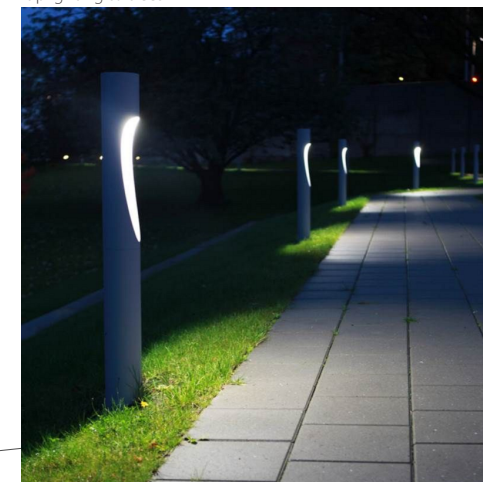
MASTERPLAN LIGHTING



Uplighting to trees



Down lighting to shelters



Bollards to pathways

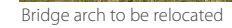
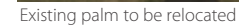


Feature lighting to artworks

Lighting is to be provided throughout the park to improve safety as well as to highlight and celebrate significant features in the park. It is recommended that pathways are lit with bollard lighting, to maintain starry sky views and the connection to country. Shelters to down lit for safety and accent lighting to illuminate the key elements at the intersection of Wollombi and Allandale Roads.

- Type 1: Uplighting to trees
- Type 2: Down lighting to shelters
- ○ ○ Type 3: Bollard lighting to pathways
- Type 4: Feature lighting to artworks/sculptures
- ● ● ● ● Type 5: Feature lighting to bridge
- Type 6: Feature lighting strip to seating wall
- Type 7: Pole lighting to carpark

This architectural site plan depicts a park or recreational area. The plan includes several circular structures, possibly fountains or seating areas, and a large rectangular building. A winding path or road is shown, along with various landscaping elements like trees and shrubs. The plan is marked with numerous small circles and lines, indicating specific features and boundaries. A scale bar is present in the bottom right corner, and a north arrow is located in the top right corner. The plan is divided into several sections, with labels 1 and 2 indicating specific areas of interest.



1. Sell existing palms for removal to another site
2. Existing bridge arch to be relocated to the Cessnock Pool (the arch was originally located at Cessnock Pool prior to being moved to Apex Park)









MASTERPLAN FURNITURE AND ELEMENTS



Water refill station



New furniture is proposed for the park. This includes new park benches, drink stations, picnic tables, shelters and drinking fountains. Park benches are located along the primary paths as well as overlooking the drainage channel and also surrounding the feature poles to the corner in the form of insitu concrete walls. Low walls provide informal seating throughout the park. It is proposed to provide naming of the park in the form of large lettering along the eastern side of the entry road.

-  Shelter with picnic tables beneath
-  Sandstone log seats
-  Concrete insitu walling seating
-  Drink station
-  Bicycle rack
-  Line of bollards
-  Park naming lettering
-  Electric car charger

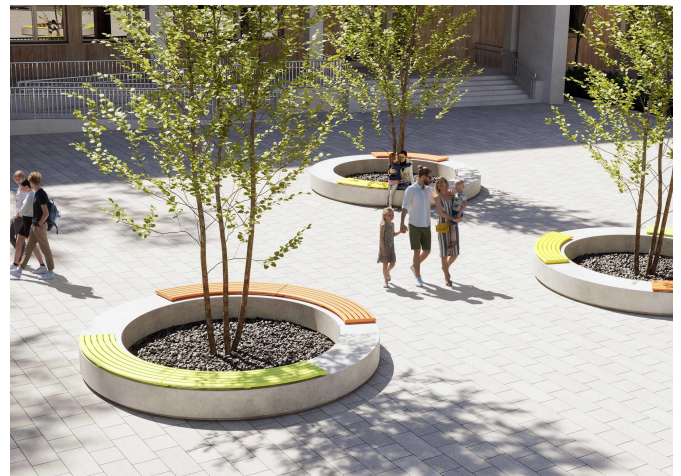
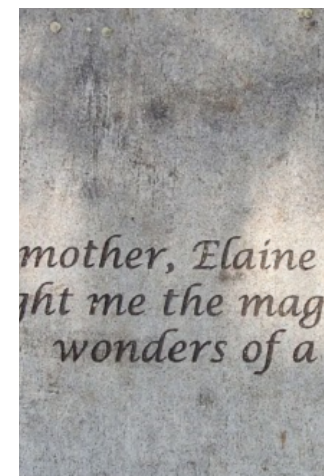
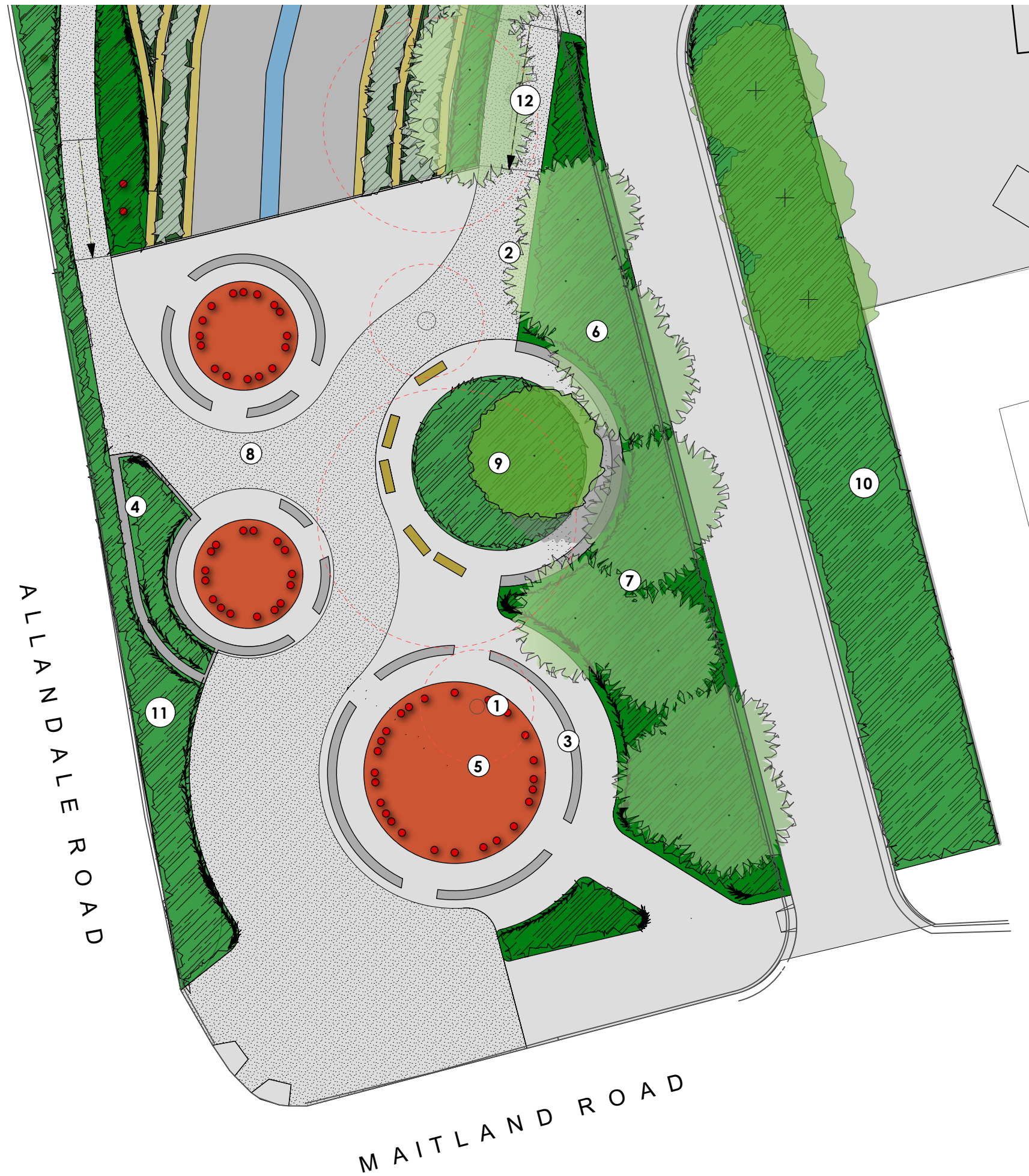
MASTERPLAN PARK PLANTING



Planting is to be predominantly low shrubs and groundcovers to retain views into and throughout the park. A mix of native plant species are proposed, with the intention to re-establish vegetation endemic to the site while also reinforcing the riparian nature of the corridor. The planting of lomandra (used by local aboriginal for weaving and eating) and other locally occurring species will contribute to the educational aspect of the park.

- Type 1:** Planting of grasses within drainage channel that are suitable to withstand occasional inundation to reinforce riparian corridor
- Type 2:** Low planting of grasses and groundcovers to ensure sightlines are retained through carpark
- Type 3:** Planting of locally occurring shrubs, grasses and groundcovers
- Type 4:** Planting of rain garden species

MASTERPLAN DETAIL AREA

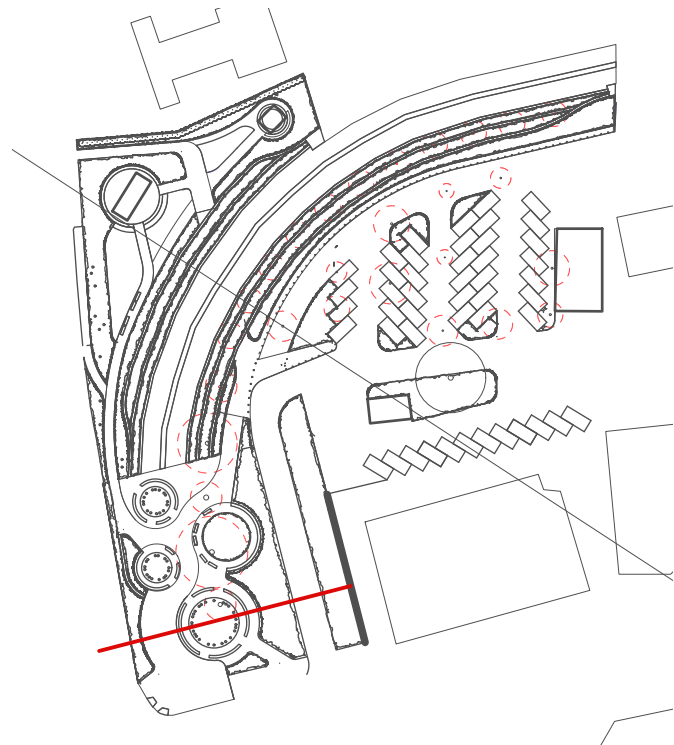


Notes

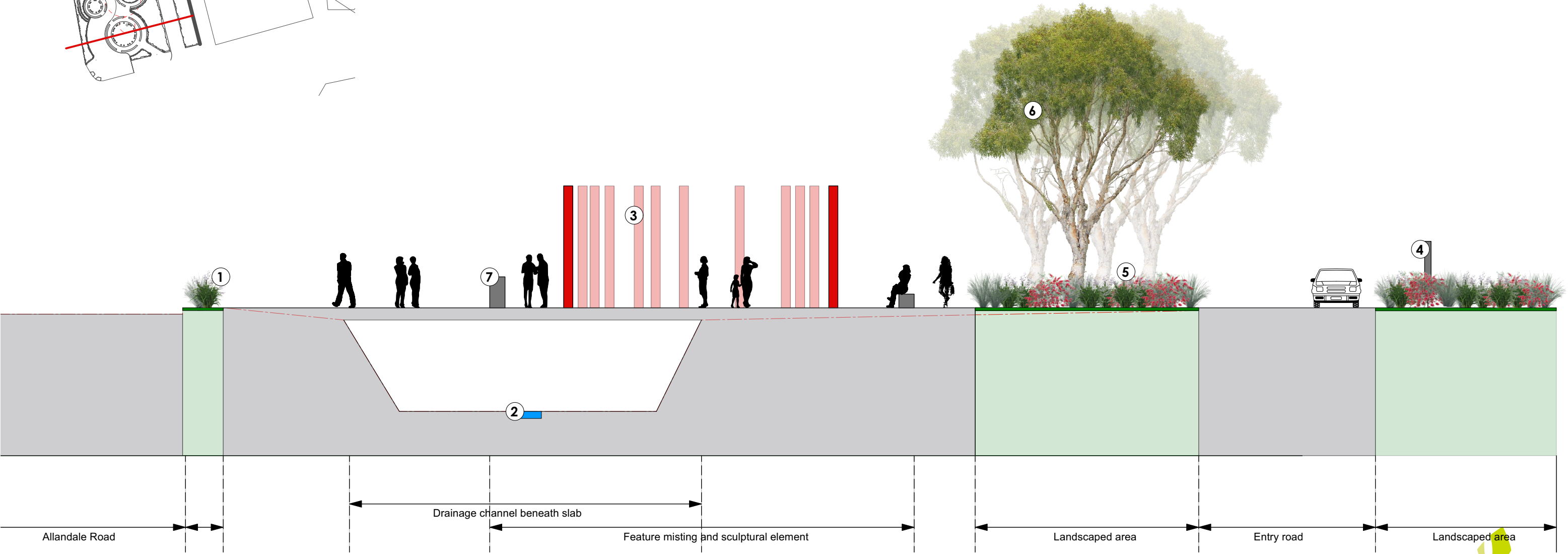
1. Vertical red poles provide an eye-catching vertical element to the corner sparking interest while symbolising the red cedar lost from the area.
2. Paving to encourage the movement of pedestrians towards the intersection
3. In situ concrete walls to have text inlaid in concrete depicting the history of the Wonnarua people in the area while providing an opportunity for seating and reflection
4. Raised planter creates separation from road
5. Circular sections to symbolise coal fires which would have been associated with local aboriginal people living in close proximity to the creek and their movement, taking the smouldering coals to their next campsite. Misters to each node to reinforce the fire element while providing a cooling effect and play element
6. Continued planting of low native grasses and vegetation endemic to the area
7. Canopy planting of Melaleuca quinquenervia and Broad-leaved paperbark
8. Concrete deck over existing channel to provide sufficient space at intersection to create gateway feature
9. Feature planting of flowering native plants (e.g. Everlasting Daisies) to symbolise hope and celebrate the new life, a new direction for the area and coming together of people and language
10. Location of the Apex Park sign
11. Vegetation along edge of road to discourage pedestrians crossing across to pool while also creating a sense of protection to space
12. Maximum 1:20 ramp

MASTERPLAN

DETAIL AREA ELEVATION

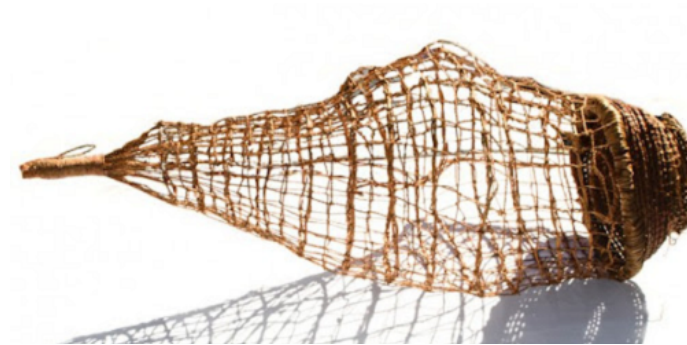
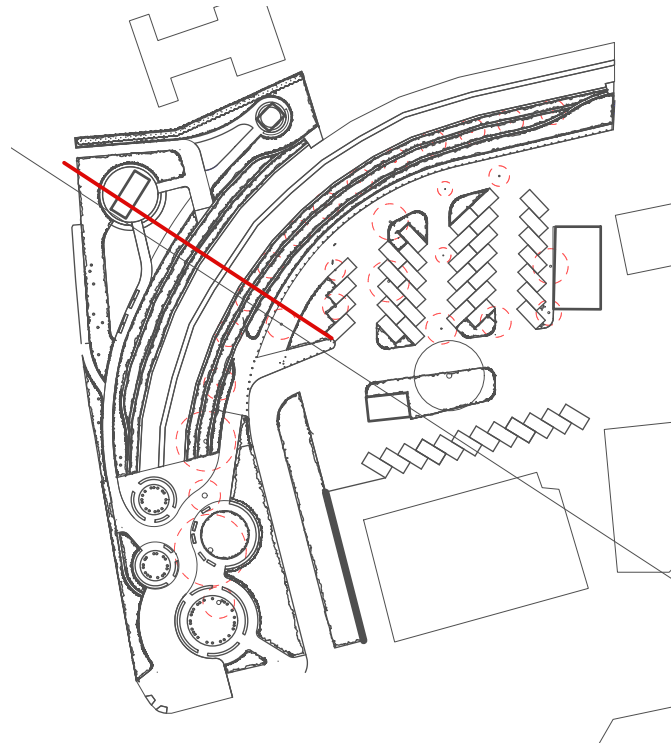


- Notes**
- 1. Low mass planting provides separation between road and public openspace on corner
 - 2. 1m wide channel to concentrate low water flows
 - 3. Vertical pole element symbolising the Forest Red Gum which were endemic to the site and also the loss of the Wonnarua people from the area. Circular positioning to reinforce the "fires" of the Wonnarua associated with campsites along the river corridor
 - 4. Large corten free standing lettering provides park name
 - 5. Mass planting of endemic native plants to reinforce green ribbon of the riparian corridor
 - 6. Copsed planting of Melaleuca quinquervia and Casurina glauca
 - 7. Institu concrete wall with the history of the Wonnarua people engraved into face



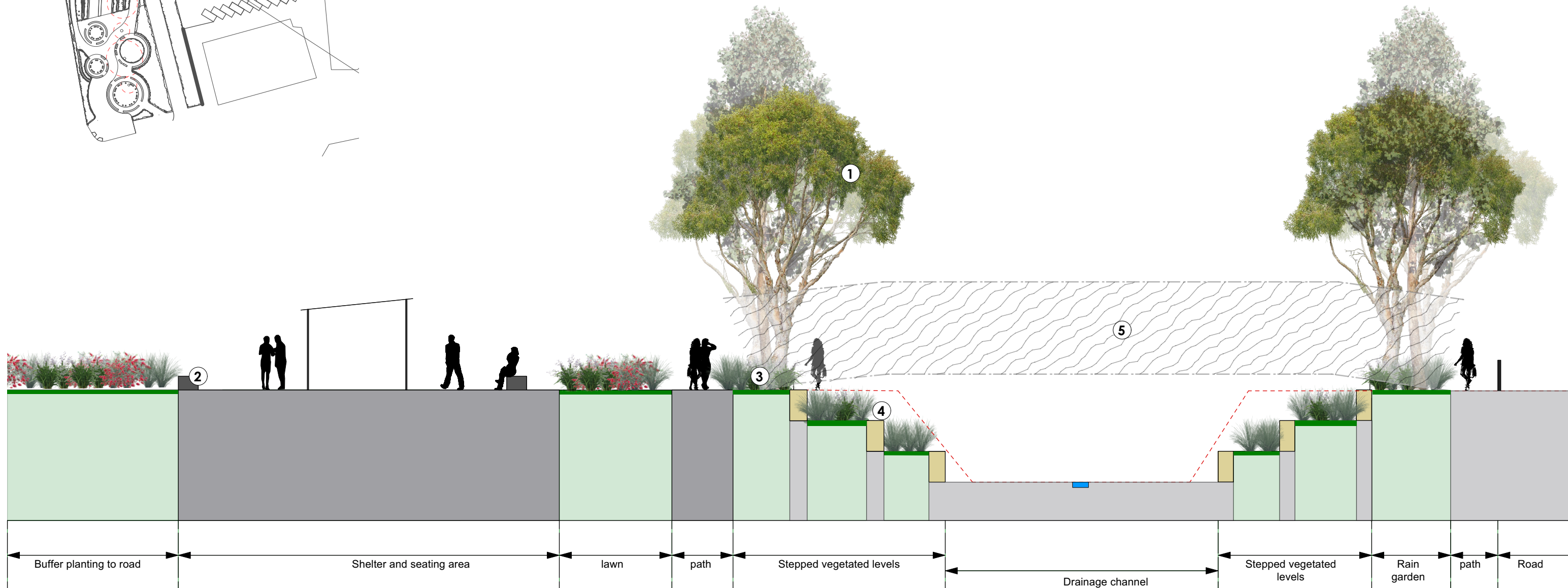
MASTERPLAN

CORRIDOR ELEVATION



Notes

1. Planting of *Casuarina glauca* and *Melaleuca quinquenervia* to create green ribbon along riparian corridor
2. Institutional concrete wall provides informal seating surrounding picnic shelter
3. Mass planting of indigenous native species to reinforce riparian corridor
4. Stepped sandstone walls to create planted levels within channel
5. Feature element - bridge - to take the form of a traditional fishing net, corralling people



MASTERPLAN

ARTISTS IMPRESSION



Walls to have engraved history of
Wonnarua People

Vertical sculptural element representing
the Forest Red Gums which were lost from
the area

Canopy planting to reinforce riparian
corridor creating a green ribbon through
the site

MASTERPLAN ARTISTS IMPRESSION



Feature planting of forest red gum as a symbol of a new beginning and the reestablishment of the land, vegetation and the people

Low walls provide seating for contemplation while reinforcing the gathering spaces

Misting element creates interest, cooling in summer and reinforces the idea of the burning coals