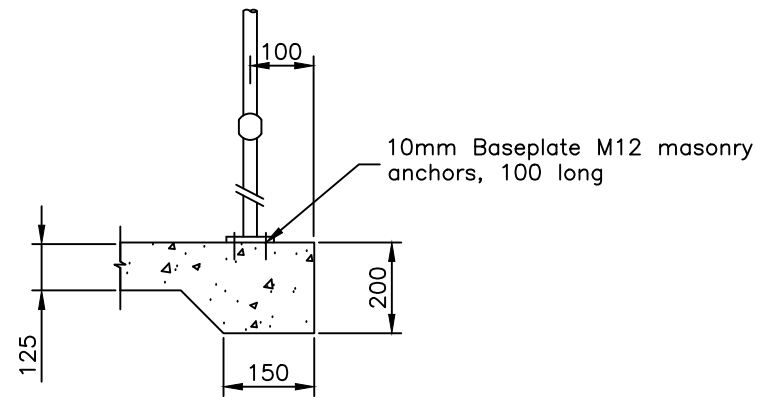


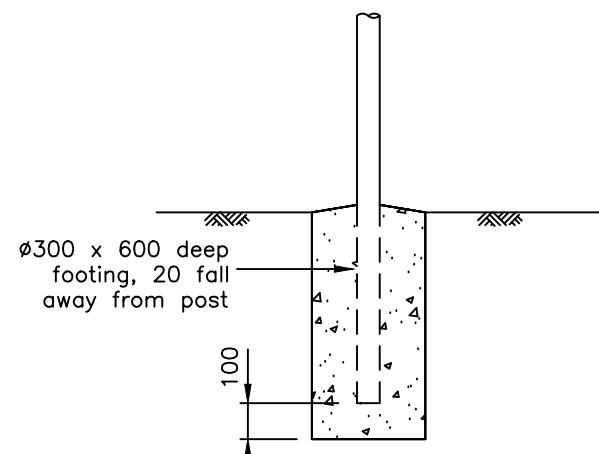
FENCE ELEVATION

NOTES:

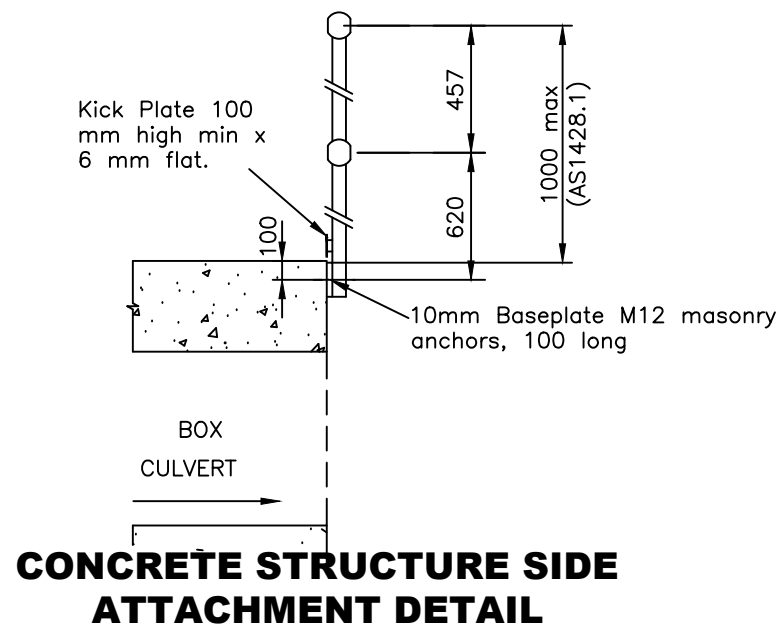
1. All components to be Hot Dipped Galvanised to A.S. 1650
2. Posts to be evenly spaced over length of handrail
3. All dimensions are in millimetres
4. Footing detail suitable for stiff clay, compacted gravels and dense sand. For other ground conditions refer to engineer
5. Not to be installed within clear zone adjacent to vehicle travel lanes
6. Handrail only - not to be used as a vehicular barrier at any time
7. All bolts shall be min. grade 4.4, snug-tight. Burr ends to prevent nuts being removed



CONCRETE PATH ATTACHMENT DETAIL



FOOTING DETAIL
Refer to Note 4



CONCRETE STRUCTURE SIDE ATTACHMENT DETAIL

NOT TO SCALE

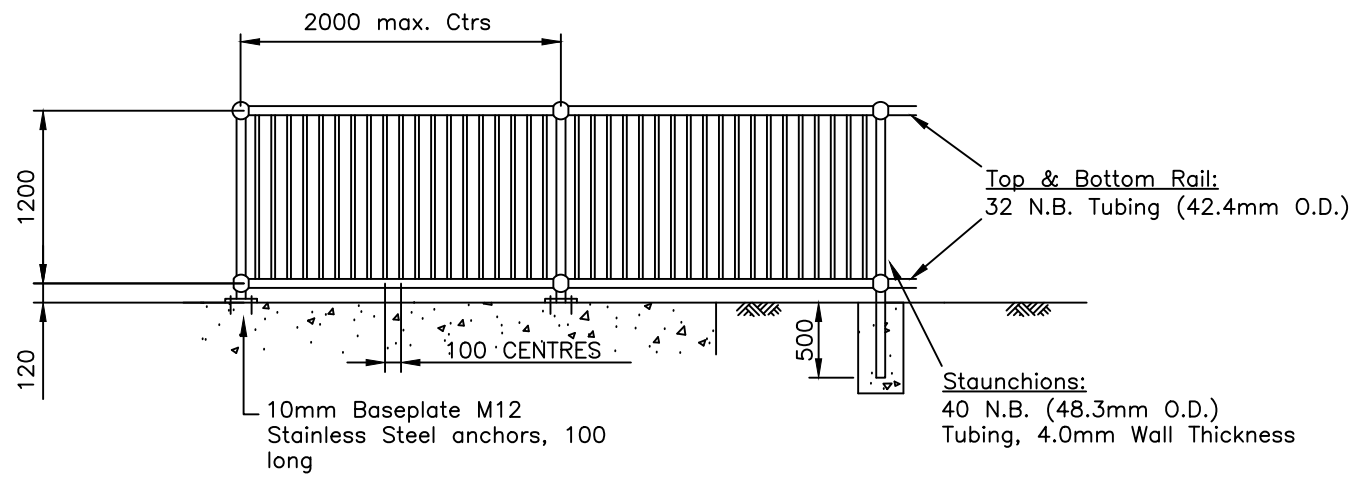
REV.	DATE	REVISION
1	JAN 2024	INITIAL ISSUE- CCC DRAWING SET
0	AUG 2022	INITIAL ISSUE- IPWEA DRAWING SET (UPDATED HANDRAILS PER AS1428.1)


CESSNOCK CITY COUNCIL
 P.O. BOX 152
 CESSNOCK
 PHONE 4993 4100
 FAX 4993 2505
ENGINEERING GUIDELINES

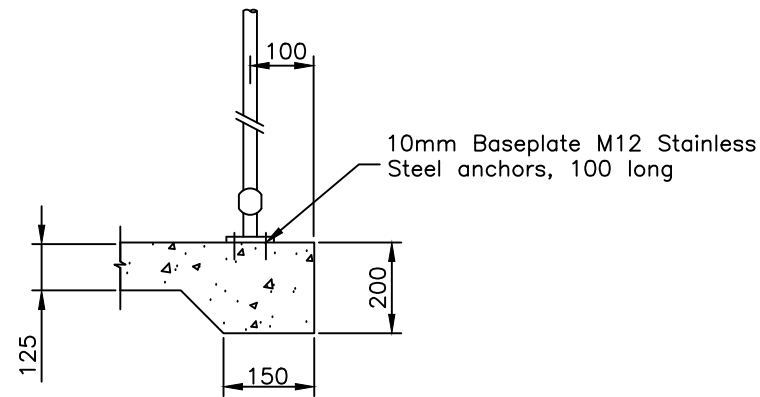
Disclaimer: This is a generic drawing. CCC makes no representation of any kind as to its use, suitability or accuracy, including for a specific project or application and users must undertake their own assessment and accept all risk in the drawing and its use. CCC has no liability of any kind arising out of or in connection with the use of this drawing.

PEDESTRIAN HANDRAIL FENCING

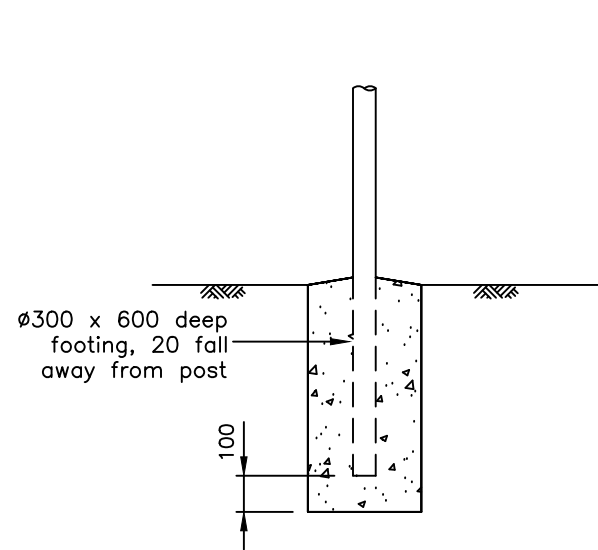
SD-OS-007



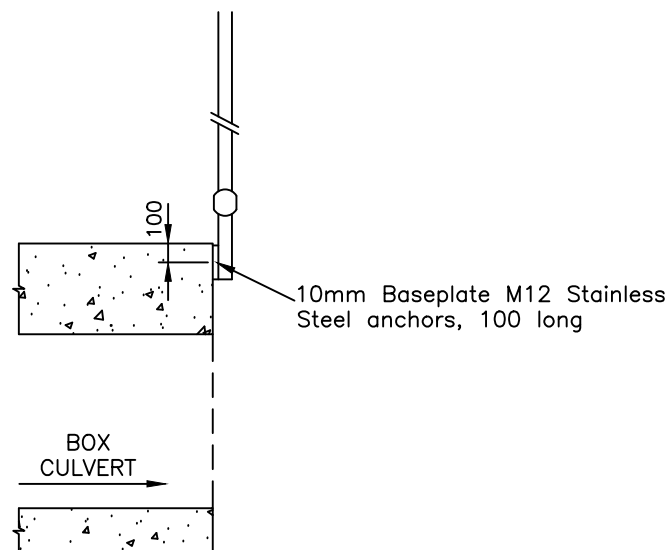
FENCE ELEVATION



CONCRETE PATH ATTACHMENT DETAIL



FOOTING DETAIL
Refer to Note 4



CONCRETE STRUCTURE SIDE ATTACHMENT DETAIL

NOTES:

1. All components to be Hot Dipped Galvanised to A.S. 1650
2. Posts to be evenly spaced over length of handrail
3. All dimensions are in millimetres
4. Footing detail suitable for stiff clay, compacted gravels and dense sand. For other ground conditions refer to engineer
5. Concrete shall be min. grade N25 in accordance with AS3600
6. Not to be installed within clear zone adjacent to vehicle travel lanes
7. Pedestrian barrier only - not to be used as a vehicular barrier at any time
8. All bolts shall be min. grade 4.4, snug-tight. Burr ends to prevent nuts being removed
9. Sleeved post detail shall be used in all areas adjacent to trafficable roadways
10. Design and installation by a reputable fencing contractor

NOT TO SCALE

REV.	DATE	REVISION
1	JAN 2024	INITIAL ISSUE- CCC DRAWING SET
0	JAN 2020	INITIAL ISSUE- IPWEA DRAWING SET


CESSNOCK CITY COUNCIL
 P.O. BOX 152 CESSNOCK
 ENGINEERING GUIDELINES
 PHONE 4993 4100
 FAX 4993 2505

Disclaimer: This is a generic drawing. CCC makes no representation of any kind as to its use, suitability or accuracy, including for a specific project or application and users must undertake their own assessment and accept all risk in the drawing and its use. CCC has no liability of any kind arising out of or in connection with the use of this drawing.

PEDESTRIAN BARRIER FENCING

SD-OS-008