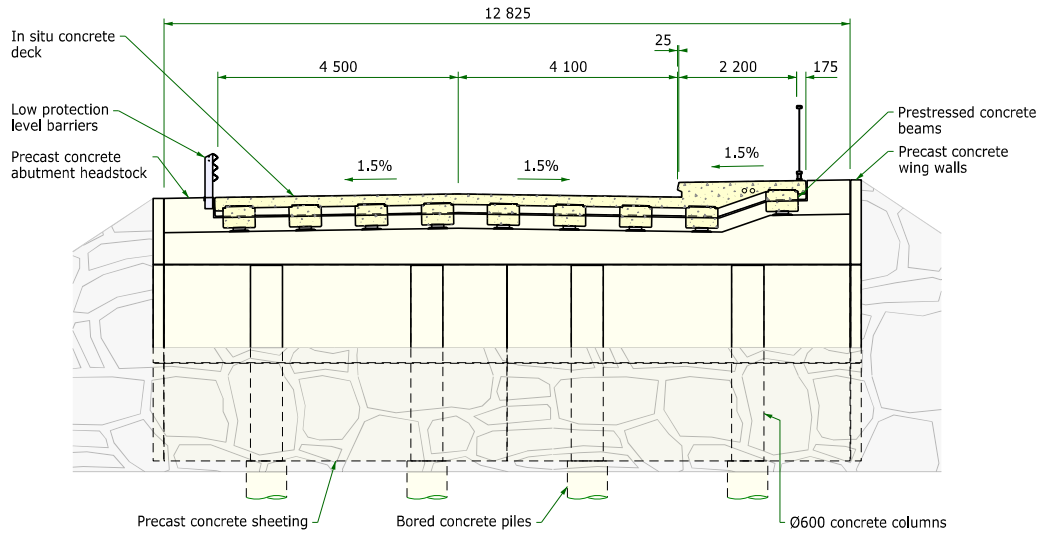


THE DRAWING IS COPYRIGHT BRIDGE DESIGN PTY LTD. THE DRAWING AND THE GENERAL DESIGN CONCEPTS CONTAINED HEREIN SHALL NOT BE USED OR REPRODUCED IN ANY FORM OTHER THAN THE FORM SUPPLIED AND FOR THE PURPOSES OF CONSTRUCTION OF THE WORKS FOR WHICH THIS SPECIFICALLY PREPARED. ANY UNAUTHORIZED REPRODUCTION OR CONSTRUCTION OF THE WORKS IS PROHIBITED.

DOWNSTREAM

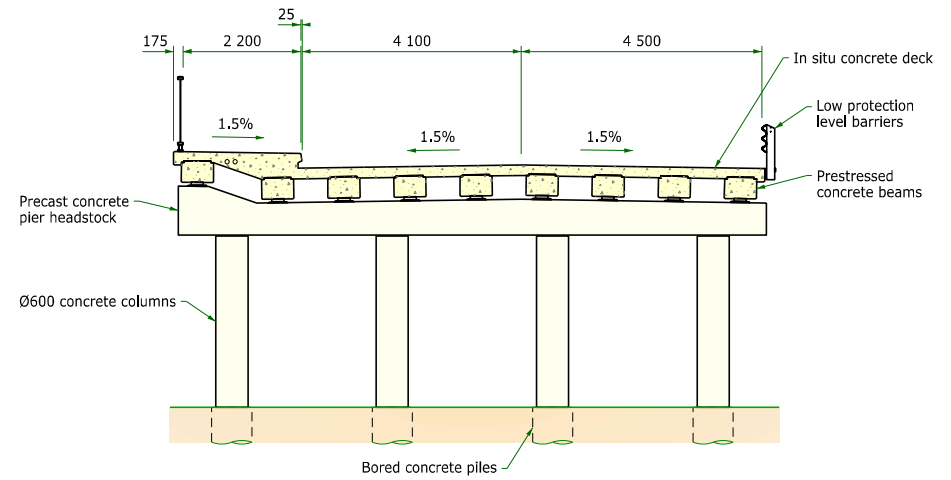
UPSTREAM



SECTION ①
1:100

UPSTREAM

DOWNSTREAM



SECTION ②
1:100

PRELIMINARY DRAWING
NOT FOR CONSTRUCTION

DRAWING SCALES TRUE AT A3

Bridge Design
 ISO 9001:2015
 KOSGAT AUSTRALIA
 Member Firm
 PO Box 9140, Wyoming,
 NSW 2250
 ph 02 4322 0011
 ABN 63 145 429 063
 Pty Ltd

DESIGN: JAA
 VERIFIED:
 DRAWING: MMO
 CHECKED:

MANAGER, BRIDGE DESIGN PTY LTD
 THIS DRAWING IS NOT APPROVED FOR
 CONSTRUCTION UNLESS SIGNED
 DIGITALLY ON THIS SHEET OR THE FIRST
 SHEET IN THIS SET OF DRAWINGS.

Kline Street
 BRIDGE OVER SWAMP CREEK
 at 0.4km north of Cessnock Road
 GENERAL ARRANGEMENT
 SHEET B

City of Cessnock
 JOB NUMBER B2223
 DOCUMENT NUMBER D03
 SHEET 3 OF 20
 REVISION P1

100mm on original

200mm on original