



CESSNOCK
CITY COUNCIL

CEMETERY INFORMATION



Contents

Monuments and Memorials	04
Interment Questions	05
Reservations: (Pre-Need)	06
At-Need Interment	07
Definitions	08
Cemetery Locations	10
Cemetery Officer	11
Memorial Plaques for Lawn Cemeteries	12
Memorial Plaques for Columbarium Walls	13
Additional Options	14
Custom Designs	16
Memorial Plaques for Ash Placements	17
How to Order a Memorial Plaque	18

Our cemeteries offer a peaceful space to reflect, remember, and honour the lives of loved ones. Whether you're planning for your own interment or making arrangements for someone dear to you, we understand that this can be an emotional and challenging process.

At Cessnock City Council, we are here to guide you, whether you're following tradition or seeking a more personal way to memorialise your loved one. With so many decisions to make, it can feel overwhelming – but we're committed to supporting you through every step of this journey



Family Plots, Gordon Williams Memorial Cemetery Aberdare



Columbarium wall



*Memorial Garden Plaques for
Ash Placements, Gordon Williams
Memorial Cemetery (also
available at Kurri Kurri & Greta)*

Monuments and Memorials

‘What Cemeteries allow monuments to be installed?’

All of Council’s nine General Cemeteries allow for the installation of approved monuments.

‘What memorialisation is available at Lawn Cemeteries?’

Council installs memorials within Lawn Cemeteries which consist of a bronze memorial plaque.

‘Can I install my own monument or undertake works on an existing monument?’

No. Due to strict standards and safety requirements all works within Council managed Cemeteries must be approved and completed by licensed persons.

‘Who do I contact for advice on monuments and/or memorial plaques?’

Council’s Cemetery Officer is able to assist with providing details of licensed monumental masons and assist with memorial plaque wording and purchases.

‘Who maintains a monument?’

The Interment Right Holder is responsible for general non-structural maintenance on monuments (e.g., general cleaning, tidiness) and is responsible for engaging licensed monumental masons to complete structural repairs, maintenance and or renewal works.

Interment Questions

‘What is an Interment Right?’

An Interment Right was formerly known as a Burial License or Right of Burial.

It is an exclusive right granted by Cessnock City Council for use of an interment site.

The holder of the Interment Right has the authority to determine who can be interred in the interment site, request the installation of monuments, inscriptions or memorials on the site.

‘Does an Interment Right Holder own the land where the interment site is located?’

No. The ownership of the land, wall, garden and memorials remains with Cessnock City Council. The Interment Right Holders’ entitlement is limited to the use and access of the interment site described in the Right for Interment.

‘Can anyone apply to have an interment into a reserved Interment site?’

The Interment Right Holder (or, if the Interment Right Holder is deceased, the executor/ authorised person of the Interment Right) are the only people able to authorise an interment.

An Application for Order for Interment, formerly known as Burial Permit, must be applied for prior to interment



*‘Bushland Gardens’ plaques and
family plots available, Kurri Kurri only*



Reservations: (Pre-Need)

‘What does Pre-Need mean?’

Pre-Need is the current terminology used when describing a reservation.

‘How do I purchase a Pre-Need Interment site? (Reservation)’

Council’s Cemetery Officer will assist with the provision and processing of a Perpetual Interment Right Pre-Need contract. The Cemetery Officer will also assist with available locations and provide information of interment options and processing of fees and charges. To arrange an appointment or to discuss your options please see contact details under how do I contact Council’s Cemetery Officer.

‘What do I receive to confirm my reservation?’

Upon assessment of application and payment of applicable fees and charges you will receive a Certificate of Perpetual Interment Right detailing your interment site details and location.

‘Can I relinquish a reservation?’

Yes, you can do this by completing a Cancellation of Perpetual Interment Right application. Council will then process and refund the amount already paid (less current administration fees set out in Council’s fees and charges)

‘What happens to a reserved/site when I am deceased?’

If the site will not be occupied by the intended Interment Right Holder/s, then the Right of Interment will become part of the Deceased Estate and will be managed by the executor.



At-Need Interment

‘What do I do if I have not reserved an interment site and need one for immediate use?’

Your Funeral Director will liaise with Council and make all the necessary arrangements. Fees and Charges are payable to Cessnock City Council.

‘How do I arrange funeral requirements at a time of need?’

Contact your Funeral Director who will then liaise with you to make all the necessary arrangements.

‘How many interments can take place in a site?’

The majority of sites in Cessnock Cemeteries are suitable for two full body interments and up to six cremated ash interments. Some sites may be restricted due to soil structure.

‘Who completes the interment?’

In the General Cemeteries (Monumental) section your Funeral Director will engage a licensed grave digger to complete the interment. In Lawn Cemeteries Council grave diggers complete the interment works.

‘Who maintains an interment site?’

Council is responsible for all ground’s maintenance in Cemeteries. The Interment Right Holder is responsible for the maintenance and up-keep of monuments excluding any memorials within Lawn Cemeteries.

NSW Government State Levy Fee to be paid for both bodily interments and ash interments. For further information visit: www.cemeteries.nsw.gov.au



Definitions

TERM	MEANING
At-need	The circumstances when a person needs an interment site or a place for ashes immediately. This usually means that a person has recently died (or where death is imminently expected).
CC Act	means the Cemeteries and Crematoria Act 2013 (NSW).
Certificate of Perpetual Interment Right	means a document that established a legal right with Council to allow Interment to take place in a specified location in a specified cemetery.
Columbarium	means a room or building with niches for funeral urns to be stored.
Cremation	A process for reducing the bodily remains by fire, heat, alkaline hydrolysis or another method allowed by the regulations.
Crematorium	A building where deceased people are cremated. It does not matter whether or not the building (or part of it) is also used for memorial services.
Funeral Director	means an individual or business licensed to carry out funeral services.
Interim Certificate of Perpetual Interment Right	means a document that established a legal right with Council to allow Interment to take place in a specified location in a specified cemetery, subject to full payment of the application Fee and issue of a Certificate of Perpetual Interim Right.
Interment	means the placement of human remains in a mausoleum, vault, Columbarium or other structure designed for the placement of such remains, or the burial in the earth of human remains (directly in the earth or within a container).
Interment site	The specific location in the cemetery where a person will be buried or their ashes will be placed.

Memorial	A gravestone, plaque, cenotaph or other monument, or any other structure or permanent physical object used to memorialise a person.
Operator or we, our, us	means Cessnock City Council who is the Cemetery Authority.
Operator's Register	means a register kept by an operator, in line with section 63 of the CC Act.
Order for Interment	A written order that the operator creates to confirm the details of the Interment immediately prior to it occurring.
Person(s) to be interred	The person(s) whose bodily remains or ashes are to be interred or placed in the Interment Site.
Perpetual or Perpetuity	means lasting indefinitely with no fixed end date.
Perpetual Interment Right	means the contract with Council that allows Interment to take place in a specified location in a specified cemetery in line with this Contract and section 44 of the CC Act. There is no entitlement to any real estate – the ownership of the land, wall, garden or memorial boulder remains with Council. An Interment Right was previously known as a right of burial or burial licence.
Perpetual Interment Right Holder or you or your	means the person recorded in the cemetery operator's register as the person that currently has the perpetual interment right and has the sole authority to determine who can be interred in the Site and to allow Council approved memorials to be placed.
Pre-need	The circumstances when a person needs a Interment site or a place for ashes at a future date. This usually means that no-one has recently died.
Representative	An officer, employee or volunteer that the operator authorises to act as its representative for the purpose of making this agreement. To be clear, a representative is not the same as an authorised agent.
Site	means the plot location and lot and will be specified in the Certificate of Perpetual Interment Right.



Cemetery Locations

Branxton Cemetery **New England Hwy, Branxton**

Branxton Cemetery was established in the late 1840s and exhibits inscriptions dating from the early 1950s to present day. It's located at the western end of Dalwood Road adjacent to New England Highway.

Memorial Types:

- Denominational/Monumental
- Columbarium Wall

Cessnock Cemetery **Cnr Wine Country Dr and Kerlew St, Cessnock**

Cessnock Cemetery is divided into denominational sections and contains monuments dating from the 1800s.

Please note the cemetery is closed to reservations with the following exceptions:

- Existing reservations
- reopening of existing burials
- ash interments into existing plots

Ellalong Cemetery **Helena St, Ellalong**

Ellalong Cemetery lies in the central eastern area of the Ellalong Township.

Memorial Types:

- Denominational/Monumental
- Columbarium Wall

Glenmore Cemetery **Wine Country Dr, Rothbury**

Glenmore Cemetery was established by members of the Methodist and Presbyterian churches in this area c1867. The cemetery is closed to new interments.

Memorial Types:

- Denominational/Monumental

Gordon Williams Memorial Lawn Cemetery **Greta St, Aberdare**

The Gordon Williams Memorial Lawn Cemetery offers a diverse range of interment options. The monumental section contains burials dating from 1901.

Memorial Types:

- Denominational/Monumental
- Lawn Section
- Ash Gardens
- Columbarium Walls
- Family Plots
- Scatter Gardens

Wollombi Cemetery **Maitland Rd, Wollombi**

Wollombi is a historically significant cemetery containing memorials from the mid-1840s to the present day.

Memorial Types:

- Denominational/Monumental

Greta Cemetery **Evans St, Greta**

Greta Cemetery was established in the 1870s with inscriptions dating from 1879. The cemetery also has a dedicated area relating to war graves which is maintained by the Office of Australian War Graves.

Memorial Types:

- Denominational/Monumental
- Columbarium Wall
- Ash Garden

Millfield Cemetery **Crump St, Millfield**

Millfield Cemetery is located behind Sweetman's Sawmill and has peaceful outlook of the Brokenback Ranges.

Memorial Types:

- Denominational/Monumental
- Columbarium Wall

Kurri Kurri Cemetery **Hospital Rd, Weston**

Kurri Kurri Cemetery offers a variety of interment and memorialisation options surrounded by a pleasant bushland setting.

Memorial Types:

- Denominational/Monumental
- Lawn Section
- Ash Gardens
- Columbarium Walls
- Bushland Gardens
- Scatter Gardens

Rothbury Cemetery **Wilderness Rd, Rothbury**

Rothbury Cemetery was established as an Anglican Cemetery and has inscriptions from as early as 1851.

Memorial Types:

- Denominational/Monumental

Cemetery Officer

'How do I speak to Council's Cemetery Officer?'

Council's Cemetery Officer is available to discuss your needs **Monday to Friday** during the hours of **9:00am – 2:00pm**.

Council's Cemetery Officer can be contacted via:
Council's Customer Relations Team on **(02) 4993 4100**
or alternatively via email:
cemetery@cessnock.nsw.gov.au

'What can Council's Cemetery Officer assist with?'

- Reservation of Interment Sites
- Interment rights enquiries and or charges
- Memorial plaque options
- Locating loved ones within Cemeteries
- Processing and assistance with applications

Memorial Plaques for Lawn Cemeteries

There are a number of options available that allow you to personalise your memorial plaque. Additional fees and charges are applicable.

A quotation and proof will be provided for approval outlining all works to be completed including any additional customised options.



Standard Memorial Plaque

380mm x 215mm and 6 lines of text.

A standard plaque can be customised to include additional lines of text, motifs, colored backgrounds, photos any alterations will have an additional cost which you will be supplied a quote for you to approve.



Artisan Collection (special)

380mm x 215mm and 6 lines of text with detailed motif background (number of designs to choose from).

To view more samples of from Phoenix Foundry, visit:
<https://phoenixfoundry.com.au/our-products/artisan-collection/>

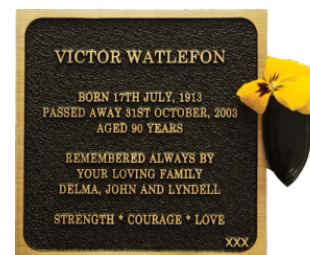


and <https://phoenixfoundry.com.au/our-products/artisancollection-2/>

Memorial Plaques for Columbarium Walls

Plaques can be customised with additional options for a more personal touch. If alterations are requested they will incur additional charges as per Fees and charges.

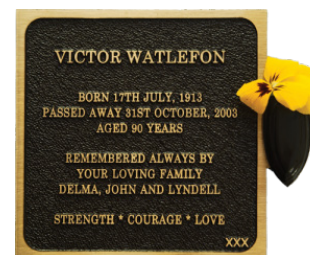
A quotation and proof will be provided for approval outlining all works to be completed including any additional customised options.



Kurri Kurri, Gordon Williams Memorial Aberdare, Branxton and Ellalong

Standard wall Plaque inc. bud holder

Standard plaque is 135mm x 135mm with 8 lines of text.



Greta and Millfield only

Large standard wall Plaque includes bud holder

Standard plaque is 150mm x 150mm with 9 lines of text.



Kurri Kurri Bushland Gardens and Gordon Williams Memorial Garden Only

Gum Leaf Scatter Garden

There are 4 different gum leaf designs to choose from with 5 lines of text.

Additional Options

There are a number of additional options available that allow you to personalise your memorial plaque. Additional fees and charges are applicable.

Lawn, Garden and Wall plaque additional lines of text

Additional lines of text can be added to all memorial plaques. Fees and charges apply per additional line of text.

Language options on memorial plaques

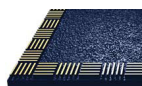
All languages may be accommodated on memorial plaques. Fees and charges are applicable. (Price on application).

Special Borders

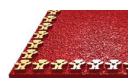
Many options are available and may be added to Lawn, Garden and Columbarium Wall plaques.



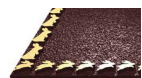
Antique



Weave



Teddy



Rabbit

Emblem standard flat motif

The addition of a pictorial motive can memorialise a loved one's special interests. Additional fees and charges apply.

A few standard examples shown, however there are many options.
<https://emblems.bronzedots.com>



Coloured backgrounds

Customisation is also available in a range of colours.



Midnight black



Casino blue



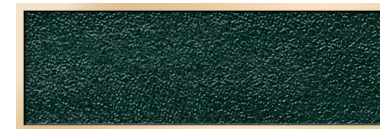
Dark brown



Dark green



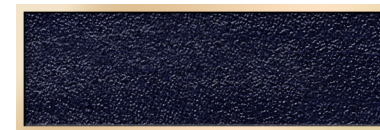
Ferguson red



Holly green



Maroon claret



Navy blue



Torquoise

Emblem special custom design

Applicants also have the option of custom designing their own emblem. (Price on application).



Photo Tile

The addition of a photo tile is a special way in which to memorialise a loved one. A photo tile is a reproduction of a photo of your loved one onto a ceramic tile. Additional fees and charges apply.

Custom Designs

These are special plaque designs or features on plaques that can be arranged with Council's Cemetery Officer. All custom designs have additional fees and charges applicable, and price is upon application.

Examples of Custom Design options

Integrated bronze image Plaque (Custom Plaque)

All plaques are available with your choice of boarder and are finished with a standard brown patina.



Leather



Beach



Country



Fully Integrated Plaque (Custom design plaque)

These plaques allow full design, flexibility and only incorporate Images and inscriptions supplied by the family.



Bronze Images

These are portraits that are reproduced in cast bronze. They can be created from an original photographic print and are all finished with a standard brown patina. These can be on Lawn, Garden and Columbarium Wall plaques.

Memorial plaques for for Ash Garden placements

Gordon Williams Memorial Aberdare, Kurri Kurri and Greta Standard Garden Plaque

135mm x 135mm 8 lines of text a standard plaque can be customised with additional options for a more personal touch. If alterations are requested they will incur additional charges as per Fees and charges. A quotation and proof will be provided for approval outlining all works to be completed including any additional customised options.



Family Plots Garden of Peace and Sundown Garden (Gordon William Memorial Aberdare only)

In these spaces you can have up to 4 ash interments base plaque 380mm x 215mm.

Add additional small plaques as required.



Base plaque

Plaques can be customised with additional options for a more personal touch. If alterations are requested they will incur additional charges as per Fees and charges. A quotation and proof will be provided for approval outlining all works to be completed including any additional customised options.



Small detachable plaque

Bushland Gardens Honeyeater, Kookaburra and Lorikeet (Kurri Kurri Only)

You can choose from the small garden plaques, family plot plaques or woodgrain that comes in various sizes.

The plots in this section range from single plots up to 6 ash placements.



Woodgrain plaque



How to Order a Memorial Plaque

- ☐ Contact Council's Cemetery Officer to arrange an appointment;
 - ☐ Complete and submit a Memorial Plaque Application;
 - ☐ Complete Plaque Wording Approval and Quotation Acceptance Confirmation;
 - ☐ Pay application fees and charges (payment can be made over the phone or in person at Cessnock City Council Administration Building);
- Upon full payment the plaque will be ordered; and
 - Council will notify the applicant of the plaque/ashes placement upon completion

Notes



Columbarium Wall at Gordon
Williams Memorial Cemetery

(02) 4993 4100

62-78 Vincent Street, Cessnock NSW 2325

council@cessnock.nsw.gov.au

www.cessnock.nsw.gov.au