



Vincent Street
CESSNOCK

16 August 2023

ADDITIONAL ENCLOSURE
WEDNESDAY, 16 AUGUST 2023
CORPORATE AND COMMUNITY

**CC45/2023 - Ward Boundaries - Adjustment to
Enrolments**

Enclosure 4: Map 4 - Option 3



Memo to: Mayor Suvaal

Copy to: All Councillors, General Manager, Directors and Communications & Engagement Team

From: Matthew Plumridge, Acting Director Corporate and Community

Subject: Ward Boundaries – Adjustment to Enrolments _ Option 3

Date: 16 August 2023

Reference: DOC2023/148465

Dear Mayor Suvaal,

I refer to your request regarding CC45/2023 Ward Boundaries – Adjustment to Enrolments. You asked whether an additional option could be provided that retains Kearsley in Ward B, as per the current ward boundaries.

Council Officers have investigated the subject matter and advise as set out below and shown in Map 4 enclosed.

Ward Boundary Redistribution – Option 3

Option 3 will change the enrolment distribution as shown in the table below:

| Option 3 (Enrolment numbers with proposed ward changes) | | | | |
|--------------------------------------------------------------------|---------------------------------------------|---------------------------------------------------------|-----------------------------------------------|-------------------------------------------------------------------------------------------------------------------------|
| Council Ward | Current Enrolment (20 June 2023) | Proposed enrolment after re-distribution | Proposed movement of enrolment | Enrolment growth to reach 0% variance (i.e. equal to proposed new highest enrolment) |
| A | 12,264 | 11,834 | -430 | 680 |
| B | 10,590 | 12,514 | 1924 | 0 |
| C | 13,148 | 12,145 | -1003 | 369 |
| D | 12,009 | 11,518 | -491 | 996 |
| Total | 48,011 | 48,011 | | |
| Highest Enrolment | 13,148 | 12,514 | | |
| Lowest Enrolment | 10,590 | 11,518 | | |
| Variance | 2,558 | 996 | | |
| Variance % | 24.15% | 8.6% | | |

Option 3 reduces the variation to an 8.6% variance, within the 10% allowance. As with other options, this does not necessarily protect Council from needing to undertake a further redistribution in the next term of Council. Option 3 allows for growth in Ward A (reflecting for example Bellbird development) and Ward D (reflecting for example Kurri Kurri-Cliffleigh development). Ward C allows for some continued growth (reflecting for example Huntlee and Abermain/Weston developments).

Difference between Option 2 and Option 3

The difference between Option 2 and Option 3 is that Kearsley is retained in Ward B (its current ward), some minor adjustments around Lake Road, and Mulbring village and south move from Ward D to Ward A.

SA1 distribution

Proposed changes are detailed below and can be seen on Map 4 (enclosed):

| Option 3 | | | |
|---------------------------------|-----------------------------------------|------------------|----------------|
| Proposed ward changes | | | |
| Statistical Area Level 1 | No. of Enrolments (20 June 2023) | From Ward | To Ward |
| 1-0601-1107-07 | 1 | B | A |
| 1-0601-1107-07 | 3 | C | A |
| 1-0601-1107-30 | 292 | C | A |
| 1-0601-1107-33 | 270 | C | A |
| 1-0601-1108-64 | 556 | B | A |
| 1-0601-1109-05 | 288 | D | A |
| 1-0601-1109-14 | 156 | D | A |
| 1-0601-1108-01 | 432 | A | B |
| 1-0601-1108-21 | 1 | C | B |
| 1-0601-1108-22 | 10 | A | B |
| 1-0601-1108-26 | 109 | C | B |
| 1-0601-1108-33 | 7 | A | B |
| 1-0601-1108-34 | 76 | A | B |
| 1-0601-1108-37 | 527 | A | B |
| 1-0601-1108-43 | 308 | A | B |
| 1-0601-1108-44 | 303 | A | B |
| 1-0601-1108-45 | 333 | A | B |
| 1-0601-1111-25 | 377 | C | B |
| 1-0601-1107-08 | 2 | B | C |
| 1-0601-1111-36 | 120 | D | C |
| 1-0601-1111-43 | 24 | D | C |
| 1-0601-1111-44 | 21 | D | C |
| 1-0601-1106-13 | 39 | C | D |
| 1-0601-1109-06 | 69 | C | D |
| 1-0601-1111-42 | 10 | C | D |

If you require any further information, please do not hesitate to contact Council's Governance and Council Services Coordinator, Keri Neveldsen

Acting Director Corporate and Community

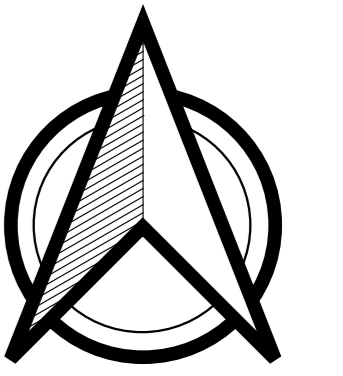
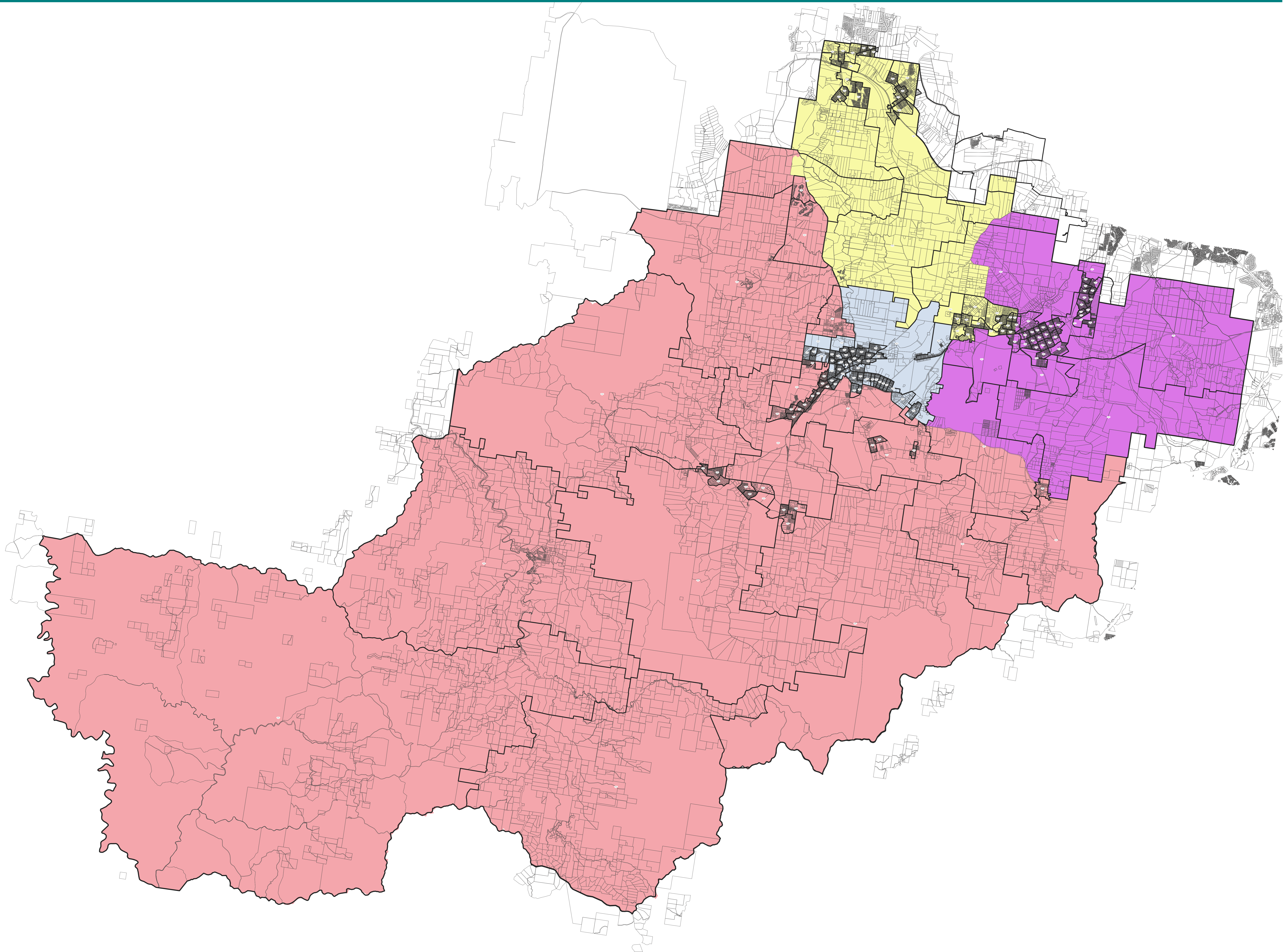
Encl Map 4 – Option 3

Ward Boundaries Review - 2023 - Option 3



LEGEND:

- Ward A – 11834
- Ward B – 12514
- Ward C – 15145
- Ward D – 11518



Date Produced:
2023-08-15T16:13:24.639

Scale:
1 : 80,000 @ A0

Reference:
Ward Boundaries Option 3

Coordinate System:
Map Grid of Australia (MGA)
Datum 94
Zone 56

Contact:
62-78 Vincent Street
(PO Box 152)
CESSNOCK NSW 2325
(02)4993 4100
council@cessnock.nsw.gov.au

Disclaimer:
This map has been produced to assist individuals in determining land details within the City of Cessnock. The information contained herein is supplied in good faith, on the basis that Council and its Staff are not liable (whether by reason of negligence, lack of care or otherwise) to any person for any damage or loss whatsoever which has occurred, or may occur, in relation to that person taking or not taking (as the case may be) action in respect of any representation, statement or advice referred to above.

Copyright:
Cessnock City Council (2023)
Spatial Services (2023)
AUSIMAGE (2023)
Nearmap (2023) - 8cm Imagery