

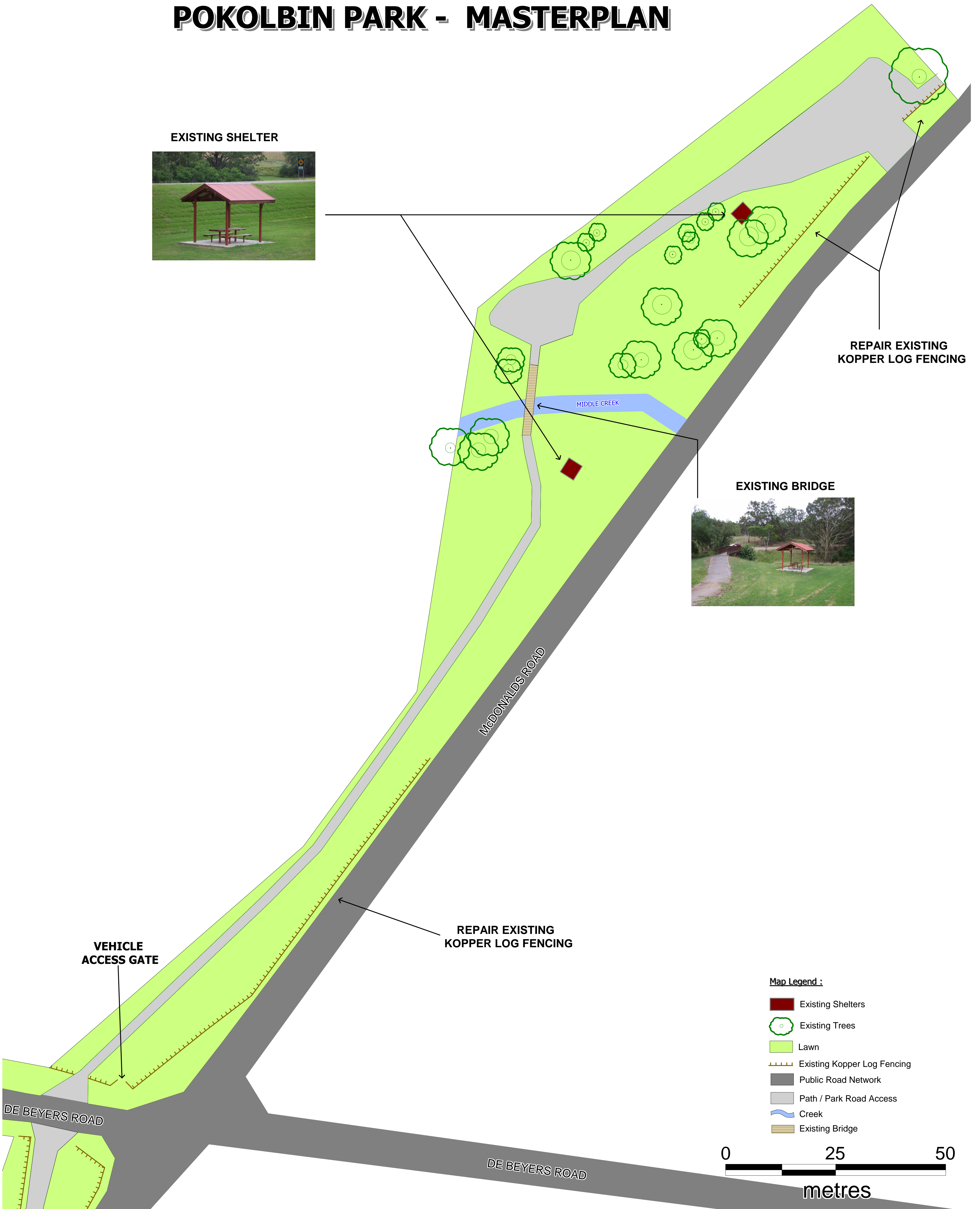
POKOLBIN PARK - MASTERPLAN

EXISTING SHELTER


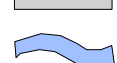



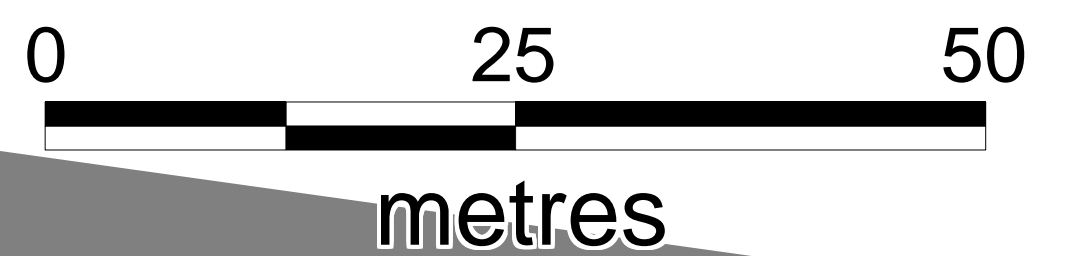
REPAIR EXISTING KOPPER LOG FENCING

EXISTING BRIDGE

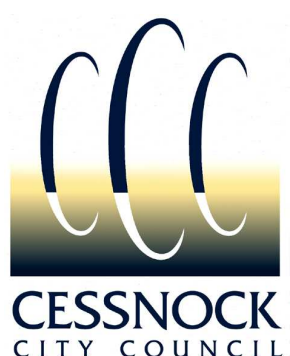


Map Legend :

-  Existing Shelters
-  Existing Trees
-  Lawn
-  Existing Kopper Log Fencing
-  Public Road Network
-  Path / Park Road Access
-  Creek
-  Existing Bridge



North End



Date Produced :
November 22, 2007
Designed By :
Cessnock City Council
Scale :
1 : 400
Reference :
G Young221107

Coordinate System :
Map Grid of Australia (MGA)
Datum 94
Zone 56.

Contact :
PO Box 152,
68-72 Vincent St,
CESSNOCK 2325.
Ph. +61 (02) 4993 4100
Fax +61 (02) 4993 4200

This map has been proudly
produced by the GIS section
of Cessnock City Council.

DISCLAIMER:
This map has been produced to assist individuals in determining
land details within the City of Cessnock and the information contained
in them is made in good faith but on the basis that Council or its Staff
are not liable (whether by reason of negligence, lack of care or otherwise)
to any person for any damage or loss whatsoever which has occurred
or may occur in relation to that person taking or not taking (as the
case may be) action in respect of any representation, statement or advice
referred to above.
Copyright © Cessnock City Council (2008)
Land & Property Information (2008)

