



Proposed demolition of toilets and relocate to a more accessible area

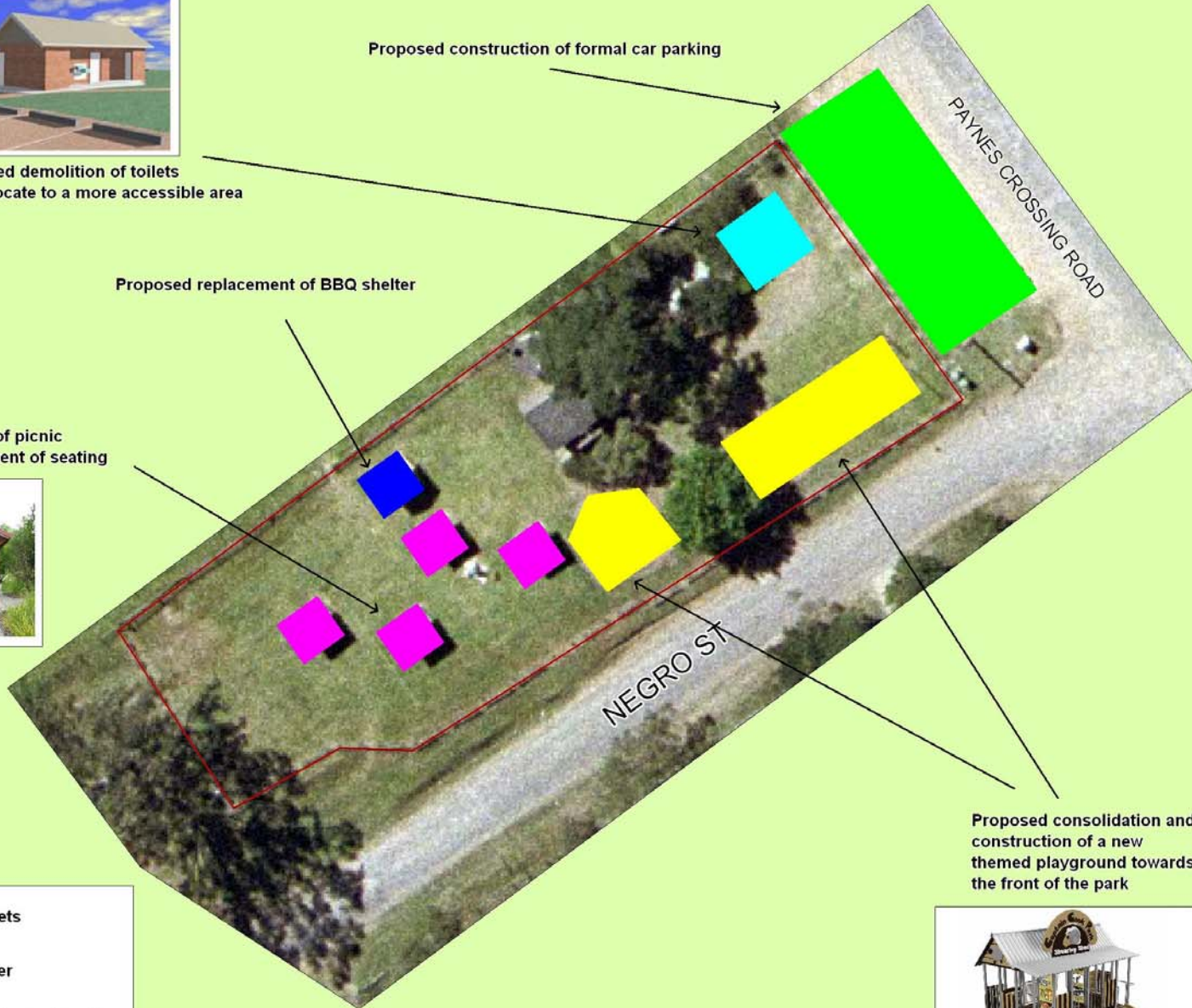
Proposed replacement of BBQ shelter

Proposed replacement of picnic shelters and refurbishment of seating

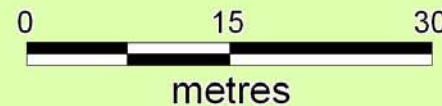


Map Legend :

-  Public toilets
-  BBQ shelter
-  Picnic shelter and seating
-  Existing playground
-  Fencing
-  Proposed formal car parking



Proposed consolidation and construction of a new themed playground towards the front of the park



Date Produced :  
24 February, 2010

Designed By :  
Cessnock City Council

Scale :  
1 : 500

Reference :  
Slacks Park\_240210

Coordinate System :  
Map Grid of Australia (MGA)  
Datum 94  
Zone 56.

Aerial Photography :  
Resolution : 20cm  
Year Captured : 2006

AUSIMAGE 2009 (c) Sinclair Knight Merz



Contact :  
PO Box 152,  
68-72 Vincent St,  
CESSNOCK 2325  
Ph: +61 (02) 4993 4100  
Fax +61 (02) 4993 4200

This map has been proudly produced by the GIS section of Cessnock City Council.

DISCLAIMER:  
This map has been produced to assist individuals in determining land details within the City of Cessnock, and the information contained in it is made in good faith but on the basis that Council or its Staff are not liable (whether by reason of negligence, lack of care or otherwise) in any person for any damage or loss whatsoever which has occurred or may occur in relation to that person taking or not taking the data on any map, unless in respect of any representation, statement or advice referred to above.

Copyright © Cessnock City Council 2010  
Land & Property Information (2010)  
AUSIMAGE 2010 © Sinclair Knight Merz

Slack's Park Draft Masterplan