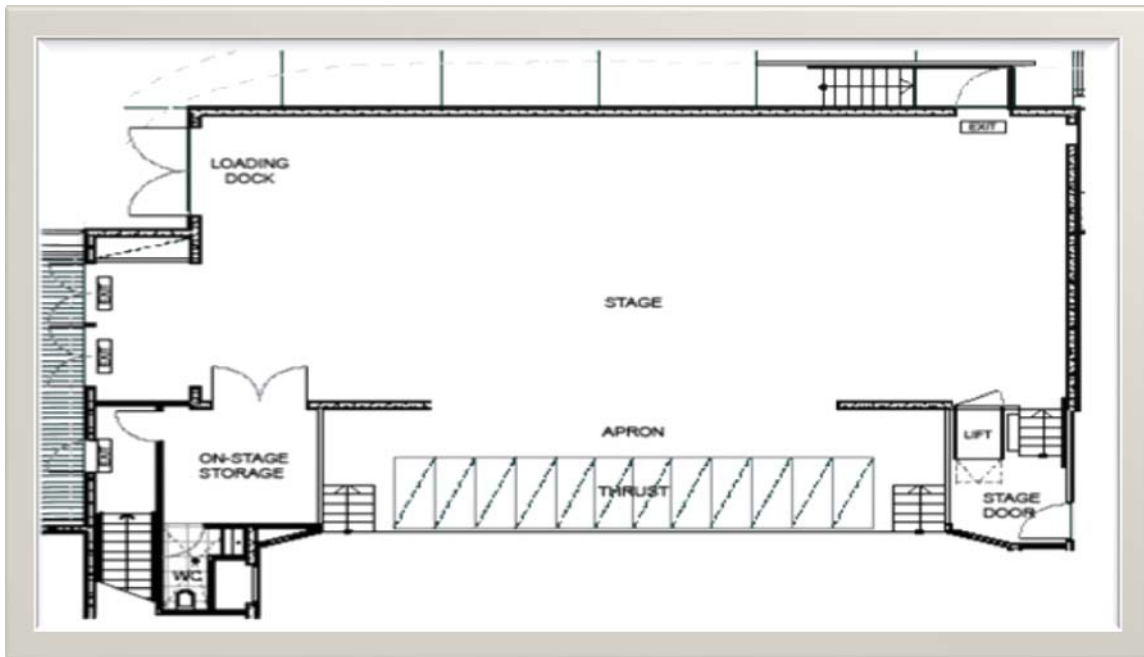


DRAFT # 4

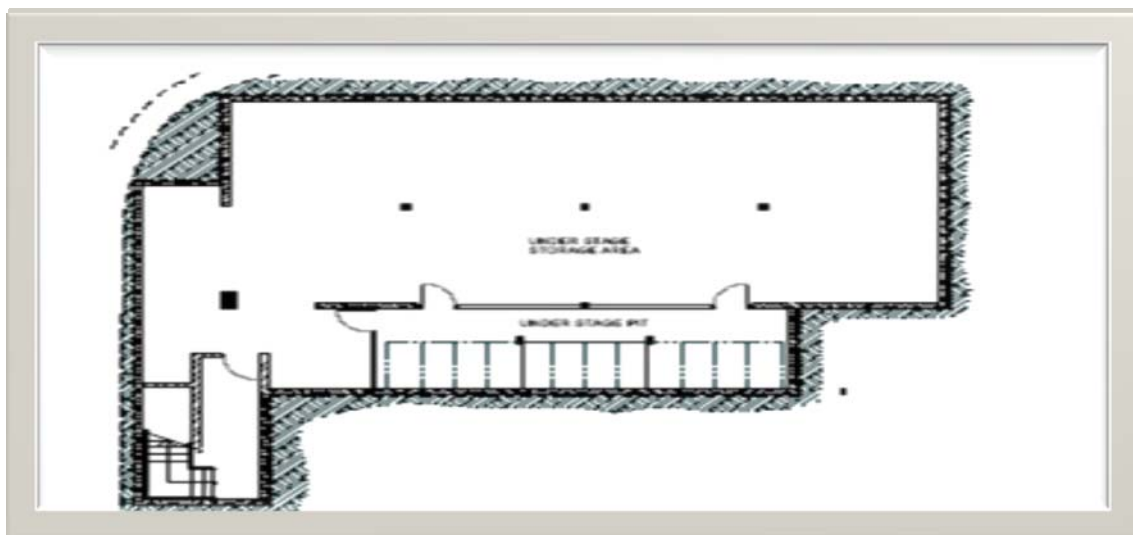
Technical Specification Information:

| | Page |
|---|------|
| Contents | 1 |
| Auditorium and Stage | 2 |
| Seating Plan / Capacity | 3 |
| Stage Plan | 4 |
| Stage Dimensions / Load in Facilities | 5 |
| Stage Hanging Plot | 6 |
| Power / Dimmers / Lighting Control Desk / Equipment | 7 |
| Standard Lighting Plot / Rig | 8 |
| Standard Light Patch FOH | 9 |
| Standard Light Patch Stage Lx 1 / Lx 2 | 10 |
| Standard Light Patch Stage Lx 3 / Lx 4 | 11 |
| Standard House Light Patch | 12 |
| Sound Desk / Equipment / Talkback | 13 |
| Standard Sound Rig / Patch | 14 |
| Stage Manager / Dressing Rooms | 15 |

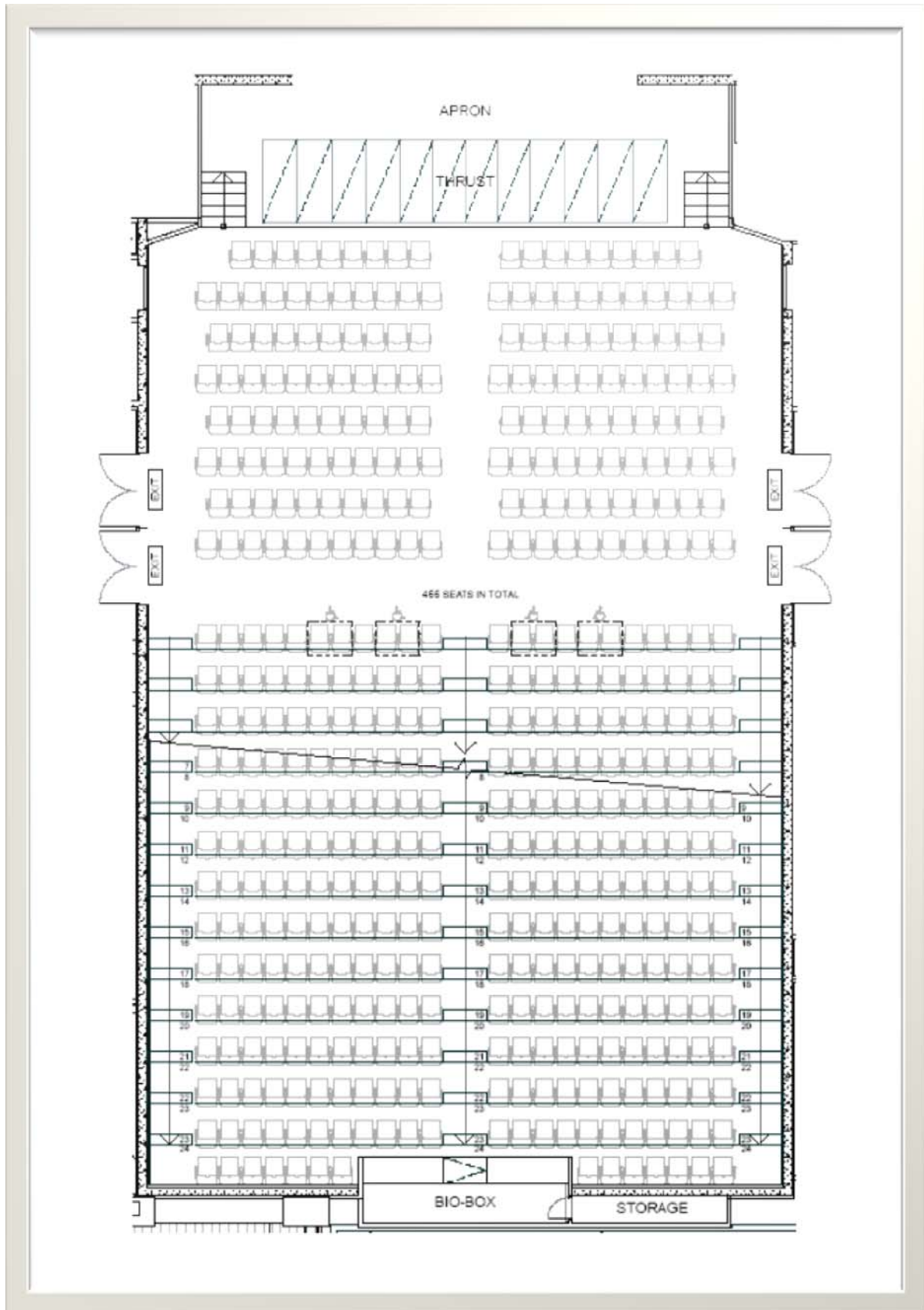
STAGE PLAN



**UNDERSTAGE/. ORCHESTRA
PIT**



THEATRE SEATING PLAN



STAGE INFORMATION

- The CPAC Theatre is a non-flytower venue. The fly system is a combination of dead hung masking and four (4) onstage lighting bars raised and lowered on mechanical pile winders.
- The masking is comprised of four (4) sets of flat black wool legs and four (4) flat black borders.
- The stage has the following Flown and Masking Items:
 - A traveller (French Action) House curtain,
 - A mid stage flat black traveller,
 - An upstage flat black traveller
 - And a white cyc.
- The Stage is a flat sprung floor. The surface is Masonite - painted flat black with the setting line running directly upstage of the proscenium arch.
- There is no safety curtain.
- There is a small Orchestra pit which if required must have the Thrust Stage pieces removed.
- Stairs both Prompt and O. Prompt provide access from the Stage to the Auditorium.
- Wheelchair lift from the Stalls to the Stage level is located in Prompt Side. (Accessed from Internal Street).

Stage Dimensions:

| | | |
|----------------------------|--------|---------|
| Proscenium Opening: | Height | 5000 mm |
| | Width | 8000 mm |

| | | |
|---------------------|-------------------------|---------|
| Setting Line | Upstage Proscenium Wall | 0000 mm |
|---------------------|-------------------------|---------|

Stage Area Upstage of Curtain / Setting Line

| | |
|---------------------------------|----------|
| Maximum Width DS (wall-to-wall) | 19000 mm |
| Maximum Width US (wall-to-wall) | 17000 mm |
| Maximum Depth to back wall | 7200 mm |
| Maximum Depth to Cyc | 6100 mm |

Stage Area Downstage of Curtain / Setting Line

| | |
|---------------------|----------|
| Apron Width | 12000 mm |
| Apron Depth | 1455 mm |
| Thrust Width | 12000 mm |
| Thrust Depth | 2035 mm |

Access to Auditorium Prompt treads & O. Prompt treads

| | | |
|---------------------------------|-----------------------------|--------------|
| PS & OP treads width | without 50mm railing | 900mm |
| | With 50mm railing | 800mm |

Stage tread in-fills for both sides are available and can be inserted upon request.

| | | |
|------------------------|--|--|
| Stage Heights: | Stage Floor to Auditorium | 1100 mm |
| | Stage Floor to underside of roof trusses | 7350 mm |
| | Stage Floor to Orchestra Pit (depth) | 2200 mm |
| Stage Surface: | Flat plywood floor on timber rafters | |
| | Finish is Tempered Masonite painted flat black | |
| | Maximum stage loading | Distributed 5.0 KPA Concentrated / point load 3.6 KPA |
| Thrust Surface: | Flat plywood floor on timber rafters | |
| | Finish is Tempered Masonite painted flat black | |
| | Maximum stage loading | Distributed 5.0 KPA Concentrated / point load 3.6 KPA |
| Orchestra Pit: | Maximum Width | 9900 mm |
| | Maximum Depth | 3050 mm |
| | Pit floor to underside of apron | 2370 mm |
| | Access from Stage (DS / O. Prompt) | |

Stage / Loading Door: Located off Car Park (entry point from Cumberland St)

| | |
|---------------------------------|---------|
| Loading Door height from street | 1600 mm |
| Maximum door access Height | 3000 mm |
| Maximum door access Width | 2300 mm |

****NOTE!:** The loading dock floor is a floating concrete slab suspended over a running creek and therefore has a load limit of 10 tons. Please advise CPAC in advance, if your truckload exceeds limit.

On Stage Trusses

On Stage Soft Goods Trusses:

12000mm Global F32 Aluminium Flat truss (300mm)
 Max distribution is 350 kg per truss.
 WLL 30kg / metre
 Max point load 30 kg
 Dead hung using rated hardware / chain / beam clamps

On Stage Soft-Goods

Soft Goods / Drapes:

| | | |
|---------------------|-------------------|------------------------------|
| Main Curtain | red 100% fullness | 5500 mm high x 12000 mm wide |
| Borders | flat black wool | 2000 mm high x 13000 mm wide |
| Legs | flat black wool | 6000 mm high x 2000 mm wide |
| Mid Stage traveller | flat black wool | 6300 mm high x 13000 mm wide |
| Up Stage traveller | flat black wool | 6300 mm high x 13000 mm wide |
| Cyc | white | 6300 mm high x 13000 mm wide |

CPAC Standard Hanging Plot / Rig

| Soft Goods / Masking | Distance From Set Line | Trim above Stage | Notes |
|-----------------------------|-------------------------------|-------------------------|------------------------------------|
| | | | |
| Black Border | 0000mm | 4800mm | Flat black wool / piped bottom |
| Black Legs | 100mm | 3800mm from C/L | Flat black wool |
| | | | |
| House Curtain | 250mm | | Traveller operated Prompt |
| | | | |
| L.x. #1 | 600mm | 5500mm | Pile winder truss lowered to stage |
| | | | |
| | | | |
| Black Border | 1500mm | 4800mm | Flat black wool / piped bottom |
| Black Legs | 1600mm | 3800mm from C/L | Flat black wool |
| | | | |
| L.x. #2 | 2000mm | 5500mm | Pile winder truss lowered to stage |
| | | | |
| | | | |
| Black Border | 2800mm | 4800mm | Flat black wool / piped bottom |
| Black Legs | 2900mm | 3800mm from C/L | Flat black wool |
| Black Tabs / Curtain | 3100mm | | Traveller operated Prompt |
| | | | |
| L.x. #3 | 3400mm | 5500mm | Pile winder truss lowered to stage |
| | | | |
| | | | |
| Black Border | 4100mm | 4800mm | Flat black wool / piped bottom |
| Black Legs | 4200mm | 3800mm from C/L | Flat black wool |
| | | | |
| L.x. #4 | 4400mm | 6000mm | Pile winder truss lowered to stage |
| | | | |
| | | | |
| Black Tabs / Curtain | 6100mm | | Traveller operated Prompt |
| Cyc | 6200mm | | White cloth |

Power / Dimmers**Power Supply FOH:**

| | |
|----------------------------|--------------------------------|
| FOH Stage lighting dimmers | 3 x 32-amp 3 phase 5 pin Wilco |
| House Light dimmers | 1 x 32-amp 3 phase 5 pin Wilco |
| Chain Motor power | 1 x 32-amp 3 phase 5 pin Wilco |
| Additional power | 2 x 32-amp 3 phase 5 pin Wilco |

Power Supply Stage:

| | |
|---------------|--------------------------------|
| Stage Dimmers | 8 x 32-amp 3 phase 5 pin Wilco |
|---------------|--------------------------------|

Road Power Hook Up:

| | |
|----------------------------|--------------------------------|
| Road Power / Outdoor Stage | 2 x 32 amp 3 phase 5 pin Wilco |
|----------------------------|--------------------------------|

Lighting Control Desk / Equipment

Light Control Desk: **Strand Lighting Preset Palette OS 48/96**
96 faders / 32 sub masters / 200 channels

Light Control (Stage): 10 preset remote Prompt corner

Light Control (House Lights): 10 preset remote Prompt corner
10 preset remote Bio Box

FOH Dimmers: Bytecraft Solution 12

On Stage Dimmers: **36 x 2.5amp dimmers** (RCD protected per circuit)
Hard Patch Outlets at Dimmer / 2 sockets per dimmer
Bytecraft Solution 12

96 x 2.5amp dimmers (RCD protected per circuit)
Hard Patch Outlets at Dimmer / 2 sockets per dimmer

Lantern Stock:

(FOH Trusses): **FOH Lx 1** 18 x Selecon "Pacific" 14-35 1000 w Profiles

FOH Lx 2 16 x Selecon "Pacific" 14-35 1000 w Profiles

(Stage Trusses): 18 x Selecon "Pacific" 14-35 1000 w Profiles
28 x Selecon "Rama" 1000 w Fresnels
16 x Par-cans 240v 1000 w
8 x "Lui" (3 circuit) 1000 w Cyc Units

Follow Spot: 1 x Selecon "Rua" 1200 w

Note: All lamps complete with bar clamp / globe / frames / barn doors / shutters.
Extra cabling brought into the theatre must be tagged, tested and current.

Lighting Trusses / Rigging

FOH Lighting Truss #1 / #2

12000mm Global F34 Aluminium Box truss (300mm x 300m)
Max distribution is 400 kg per truss.
WLL 56kg / metre
Max point load 100 kg
Raised and lowered by 2 x 500kg 'Loadstar' chain motors

Operators control is located in service cupboard in Internal Street, Left of Auditorium Doors.

Note: Operated by authorized personnel only!

On Stage Lighting Truss #1 / #2 / #3 / #4

12000mm Global F32 Aluminium Flat truss (300mm)
Max distribution is 500 kg per truss.
WLL 35kg / metre
Max point load 150 kg
Raised and lowered by JANDS pile winders

Note: Winches must be operated by authorized personnel only!

Distances from s front of stage: FOH Truss #1: 1780mm

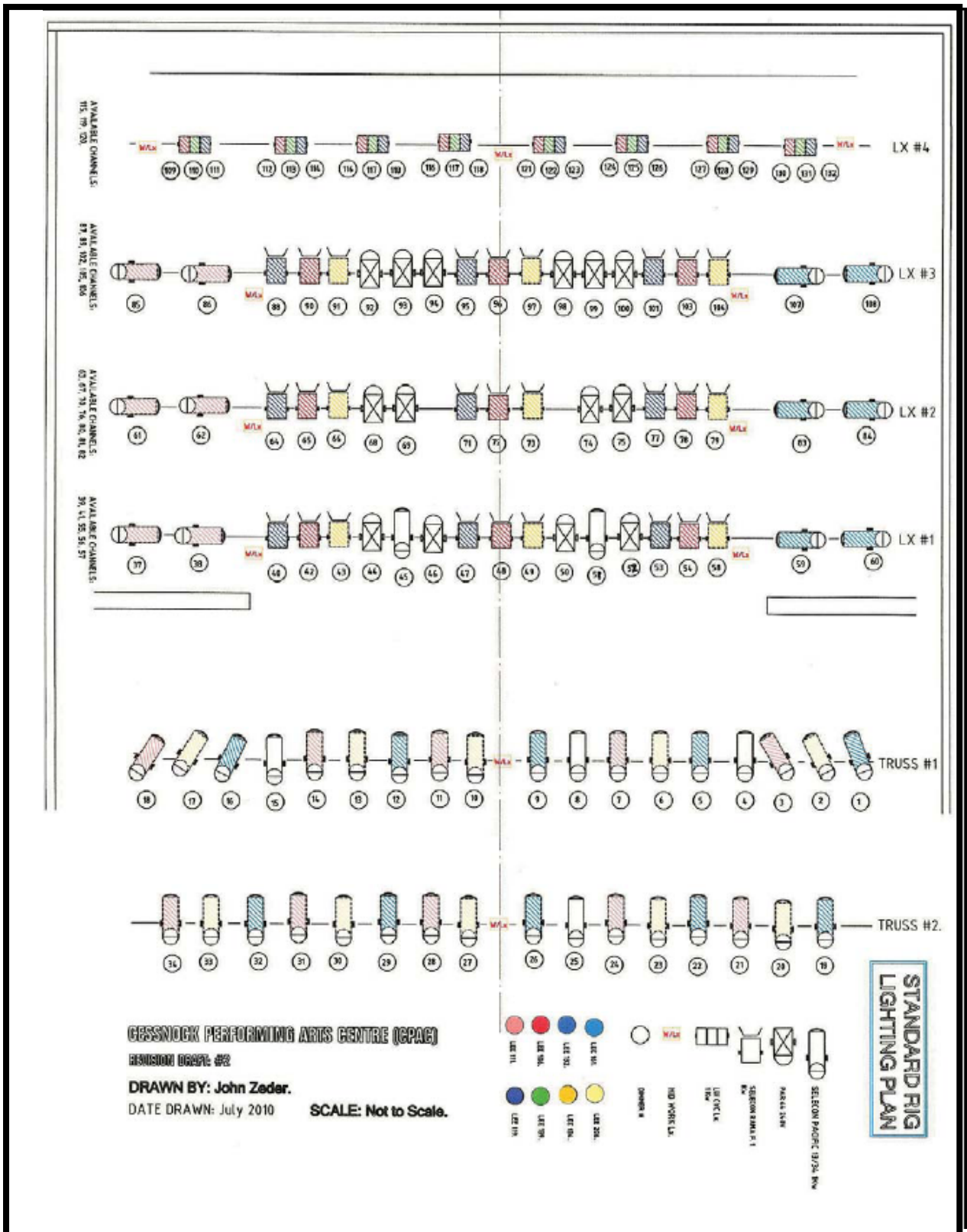
FOH Truss #2: 6800mm

For on-Stage LX Bars refer to Standard Hanging Plot.

NOTE: Access to FOH Trusses is awkward, requiring the displacement of several seat rows to locate ladder into position to focus lanterns. This exercise is time consuming and requires a minimum of 2 staff members to undertake properly and safely. Bookers are encouraged to take this into consideration when scheduling rigging, focus and plotting sessions in this venue.

Same applies to rig restore. Additional staffing charges may apply depending on the complexity of lantern changes made to both FOH trusses.

Standard Lighting Rig: Revised draft #3



NOTE: A PDF version of plan is available in CPAC website linked to Cessnock City Council website

<http://www.cessnock.nsw.gov.au/cpac>

| PATCH SHEET | | | | | | |
|---|------------------------------|-------------|----------------|---------------|----------------|---------------|
| <u>FOH TRUSS #1 (Front of Apron)</u> | | | | | | |
| | | | | | DESK | |
| LAMP # | LANTERN TYPE | LOOM | CIRCUIT | DIMMER | CHANNEL | COLOUR |
| PS 1 | Selecon Pacific 14-35° / 1Kw | FOH 1A | 1 | 1 | 1 | L 161 |
| 2 | Selecon Pacific 14-35° / 1Kw | | 2 | 2 | 2 | L 206 |
| 3 | Selecon Pacific 14-35° / 1Kw | | 3 | 3 | 3 | L 111 |
| 4 | Selecon Pacific 14-35° / 1Kw | | 4 | 4 | 4 | OW |
| 5 | Selecon Pacific 14-35° / 1Kw | | 5 | 5 | 5 | L 161 |
| 6 | | | 6 | | | |
| 7 | | FOH 1B | 1 | | | |
| 8 | Selecon Pacific 14-35° / 1Kw | | 2 | 6 | 6 | L 206 |
| 9 | Selecon Pacific 14-35° / 1Kw | | 3 | 7 | 7 | L 111 |
| 10 | Selecon Pacific 14-35° / 1Kw | | 4 | 8 | 8 | OW |
| 11 | | | 5 | | | |
| 12 | Selecon Pacific 14-35° / 1Kw | | 6 | 9 | 9 | L 161 |
| 13 | | FOH 1C | 1 | | | |
| 14 | Selecon Pacific 14-35° / 1Kw | | 2 | 10 | 10 | L 206 |
| 15 | Selecon Pacific 14-35° / 1Kw | | 3 | 11 | 11 | L 111 |
| 16 | Selecon Pacific 14-35° / 1Kw | | 4 | 12 | 12 | L 161 |
| 17 | Selecon Pacific 14-35° / 1Kw | | 5 | 13 | 13 | L 206 |
| 18 | | | 6 | | | |
| 19 | Selecon Pacific 14-35° / 1Kw | FOH 1D | 1 | 14 | 14 | L 111 |
| 20 | Selecon Pacific 14-35° / 1Kw | | 2 | 15 | 15 | OW |
| 21 | | | 3 | | | |
| 22 | Selecon Pacific 14-35° / 1Kw | | 4 | 16 | 16 | L 161 |
| 23 | Selecon Pacific 14-35° / 1Kw | | 5 | 17 | 17 | L 206 |
| OP 24 | Selecon Pacific 14-35° / 1Kw | | 6 | 18 | 18 | L 111 |
| | | | | | | |
| | | | | | | |

| PATCH SHEET | | | | | | |
|-------------|-------------------------------|--------|---------|--------|---------|--------|
| | <u>FOH TRUSS #2 (Mid Aud)</u> | | | | DESK | |
| LAMP # | LANTERN TYPE | LOOM | CIRCUIT | DIMMER | CHANNEL | COLOUR |
| PS 1 | Selecon Pacific 14-35° / 1Kw | FOH 2A | 1 | 19 | 19 | L 161 |
| 2 | Selecon Pacific 14-35° / 1Kw | | 2 | 20 | 20 | L 206 |
| 3 | Selecon Pacific 14-35° / 1Kw | | 3 | 21 | 21 | L 111 |
| 4 | | | 4 | | | |
| 5 | Selecon Pacific 14-35° / 1Kw | | 5 | 22 | 22 | L 161 |
| 6 | Selecon Pacific 14-35° / 1Kw | | 6 | 23 | 23 | L 206 |
| 7 | | FOH 2B | 1 | | | |
| 8 | | | 2 | | | |
| 9 | Selecon Pacific 14-35° / 1Kw | | 3 | 24 | 24 | L 111 |
| 10 | Selecon Pacific 14-35° / 1Kw | | 4 | 25 | 25 | OW |
| 11 | Selecon Pacific 14-35° / 1Kw | | 5 | 26 | 26 | L 161 |
| 12 | Selecon Rama Fresnl/ 1Kw | | 6 | 35 | 35 | OW |
| 13 | | FOH 2C | 1 | | | |
| 14 | | | 2 | | | |
| 15 | Selecon Pacific 14-35° / 1Kw | | 3 | 27 | 27 | L 206 |
| 16 | Selecon Pacific 14-35° / 1Kw | | 4 | 28 | 28 | L 111 |
| 17 | Selecon Pacific 14-35° / 1Kw | | 5 | 29 | 29 | L 161 |
| 18 | Selecon Pacific 14-35° / 1Kw | | 6 | 30 | 30 | L 206 |
| 19 | | FOH 2D | 1 | | | |
| 20 | Selecon Pacific 14-35° / 1Kw | | 2 | 31 | 31 | L 111 |
| 21 | Selecon Pacific 14-35° / 1Kw | | 3 | 32 | 32 | L 161 |
| 22 | Selecon Pacific 14-35° / 1Kw | | 4 | 33 | 33 | L 206 |
| 23 | Selecon Pacific 14-35° / 1Kw | | 5 | 34 | 34 | L 111 |
| OP 24 | | | 6 | | | |
| | | | | | | |
| | | | | | | |

PATCH SHEET

| STAGE TRUSS #1 (US of Prosc) | | | | | | |
|-------------------------------------|------------------------------|--------|---------|--------|---------|-----------------|
| | | | | | DESK | |
| LAMP # | LANTERN TYPE | LOOM | CIRCUIT | DIMMER | CHANNEL | COLOUR |
| OP 1 | Selecon Pacific 14-35° / 1Kw | STG 1A | 1 | 37 | 37 | L 111 + Frst |
| 2 | Selecon Pacific 14-35° / 1Kw | | 2 | 38 | 38 | L 111 + Frst |
| 3 | | | 3 | | | |
| 4 | Selecon Rama Fresnl/ 1Kw | | 4 | 40 | 40 | L 132 |
| 5 | | | 5 | | | |
| 6 | Selecon Rama Fresnl/ 1Kw | | 6 | 42 | 42 | L 106 |
| 7 | Selecon Rama Fresnl/ 1Kw | STG 1B | 1 | 43 | 43 | L 134 |
| 8 | Par Can 64 / 1Kw | | 2 | 44 | 44 | |
| 9 | Selecon Pacific 14-35° / 1Kw | | 3 | 45 | 45 | |
| 10 | Par Can 64 / 1Kw | | 4 | 46 | 46 | |
| 11 | Selecon Rama Fresnl/ 1Kw | | 5 | 47 | 47 | L 132 |
| 12 | Selecon Rama Fresnl/ 1Kw | | 6 | 48 | 48 | L 106 |
| 13 | Selecon Rama Fresnl/ 1Kw | STG 1C | 1 | 49 | 49 | L 134 |
| 14 | Par Can 64 / 1Kw | | 2 | 50 | 50 | |
| 15 | Selecon Pacific 14-35° / 1Kw | | 4 | 51 | 51 | |
| 16 | Par Can 64 / 1Kw | | 3 | 52 | 52 | |
| 17 | Selecon Rama Fresnl/ 1Kw | | 5 | 53 | 53 | L 132 |
| 18 | Selecon Rama Fresnl/ 1Kw | | 6 | 54 | 54 | L 106 |
| 19 | | STG 1D | 1 | 55 | 55 | |
| 20 | | | 2 | | | |
| 21 | | | 3 | | | |
| 22 | Selecon Rama Fresnl/ 1Kw | | 4 | 58 | 58 | L 134 |
| 23 | Selecon Pacific 14-35° / 1Kw | | 5 | 59 | 59 | L 161 + Frst |
| PS 24 | Selecon Pacific 14-35° / 1Kw | | 6 | 60 | 60 | L 161 + Frst |
| | | | | | | |
| | | | | | | |

PATCH SHEET

| STAGE TRUSS #2 | | | | | | |
|-----------------------|------------------------------|--------|---------|--------|---------|-----------------|
| | | | | | DESK | |
| LAMP # | LANTERN TYPE | LOOM | CIRCUIT | DIMMER | CHANNEL | COLOUR |
| OP 1 | Selecon Pacific 14-35° / 1Kw | STG 2A | 1 | 61 | 61 | L 111 + Frst |
| 2 | Selecon Pacific 14-35° / 1Kw | | 2 | 62 | 62 | L 111 + Frst |
| 3 | | | 3 | | | |
| 4 | Selecon Rama Fresnl/ 1Kw | | 4 | 64 | 64 | L 132 |
| 5 | Selecon Rama Fresnl/ 1Kw | | 5 | 65 | 65 | L 106 |
| 6 | Selecon Rama Fresnl/ 1Kw | | 6 | 66 | 66 | L 134 |
| 7 | | STG 2B | 1 | | | |
| 8 | Par Can 64 / 1Kw | | 2 | 68 | 68 | |
| 9 | Par Can 64 / 1Kw | | 3 | 69 | 69 | |
| 10 | | | 4 | | | |
| 11 | Selecon Rama Fresnl/ 1Kw | | 5 | 71 | 71 | L 132 |
| 12 | Selecon Rama Fresnl/ 1Kw | | 6 | 72 | 72 | L 106 |
| 13 | Selecon Rama Fresnl/ 1Kw | STG 2C | 1 | 73 | 73 | L 134 |
| 14 | Par Can 64 / 1Kw | | 2 | 74 | 74 | |
| 15 | Par Can 64 / 1Kw | | 3 | 75 | 75 | |
| 16 | | | 4 | | | |
| 17 | Selecon Rama Fresnl/ 1Kw | | 5 | 77 | 77 | L 132 |
| 18 | Selecon Rama Fresnl/ 1Kw | | 6 | 78 | 78 | L 106 |
| 19 | Selecon Rama Fresnl/ 1Kw | STG 2D | 1 | 79 | 79 | L 134 |
| 20 | | | 2 | | | |
| 21 | | | 3 | | | |
| 22 | | | 4 | | | |
| 23 | Selecon Pacific 14-35° / 1Kw | | 5 | 83 | 83 | L 161 + Frst |
| PS 24 | Selecon Pacific 14-35° / 1Kw | | 6 | 84 | 84 | L 161 + Frst |
| | | | | | | |
| | | | | | | |

PATCH SHEET

| STAGE TRUSS #3 | | | | | | |
|-----------------------|------------------------------|-------------|----------------|---------------|----------------|-----------------|
| | | | | | DESK | |
| LAMP # | LANTERN TYPE | LOOM | CIRCUIT | DIMMER | CHANNEL | COLOUR |
| OP 1 | Selecon Pacific 14-35° / 1Kw | STG 3A | 1 | 85 | 85 | L 111 + Frst |
| 2 | Selecon Pacific 14-35° / 1Kw | | 2 | 86 | 86 | L 111 + Frst |
| 3 | | | 3 | | | |
| 4 | Selecon Rama Fresnl/ 1Kw | | 4 | 88 | 88 | L 132 |
| 5 | | | 5 | | | |
| 6 | Selecon Rama Fresnl/ 1Kw | | 6 | 90 | 90 | L 106 |
| 7 | Selecon Rama Fresnl/ 1Kw | STG 3B | 1 | 91 | 91 | L 134 |
| 8 | Par Can 64 / 1Kw | | 2 | 92 | 92 | |
| 9 | Par Can 64 / 1Kw | | 3 | 93 | 93 | |
| 10 | Par Can 64 / 1Kw | | 4 | 94 | 94 | |
| 11 | Selecon Rama Fresnl/ 1Kw | | 5 | 95 | 95 | L 132 |
| 12 | Selecon Rama Fresnl/ 1Kw | | 6 | 96 | 96 | L 106 |
| 13 | Selecon Rama Fresnl/ 1Kw | STG 3C | 1 | 97 | 97 | L 134 |
| 14 | Par Can 64 / 1Kw | | 2 | 98 | 98 | |
| 15 | Par Can 64 / 1Kw | | 3 | 99 | 99 | |
| 16 | Par Can 64 / 1Kw | | 4 | 100 | 100 | |
| 17 | Selecon Rama Fresnl/ 1Kw | | 5 | 101 | 101 | L 132 |
| 18 | | | 6 | | | |
| 19 | Selecon Rama Fresnl/ 1Kw | STG 3D | 1 | 103 | 103 | L 106 |
| 20 | Selecon Rama Fresnl/ 1Kw | | 2 | 104 | 104 | L 134 |
| 21 | | | 3 | | | |
| 22 | | | 4 | | | |
| 23 | Selecon Pacific 14-35° / 1Kw | | 5 | 107 | 107 | L 161 + Frst |
| PS 24 | Selecon Pacific 14-35° / 1Kw | | 6 | 108 | 108 | L 161 + Frst |
| | | | | | | |
| | | | | | | |

PATCH SHEET

| STAGE TRUSS #4 | | | | | | |
|-----------------------|---------------------|-------------|----------------|---------------|---------------------|---------------|
| LAMP # | LANTERN TYPE | LOOM | CIRCUIT | DIMMER | DESK CHANNEL | COLOUR |
| OP 1 | Lui Cyc Wash / 1Kw | STG 4A | 1 | 109 | 109 | L 106 |
| 1 | Lui Cyc Wash / 1Kw | | 2 | 110 | 110 | L 139 |
| 1 | Lui Cyc Wash / 1Kw | | 3 | 111 | 111 | L 119 |
| 2 | Lui Cyc Wash / 1Kw | | 1 | 109 | 109 | L 106 |
| 2 | Lui Cyc Wash / 1Kw | | 2 | 110 | 110 | L 139 |
| 2 | Lui Cyc Wash / 1Kw | | 3 | 111 | 111 | L 119 |
| 3 | | | 4 | | | |
| 4 | | | 5 | | | |
| 5 | | | 6 | | | |
| 6 | Lui Cyc Wash / 1Kw | STG 4B | 1 | 115 | 115 | L 106 |
| 6 | Lui Cyc Wash / 1Kw | | 2 | 116 | 116 | L 139 |
| 6 | Lui Cyc Wash / 1Kw | | 3 | 117 | 117 | L 119 |
| 7 | Lui Cyc Wash / 1Kw | | 4 | 118 | 118 | L 106 |
| 7 | Lui Cyc Wash / 1Kw | | 5 | 119 | 119 | L 139 |
| 7 | Lui Cyc Wash / 1Kw | | 6 | 120 | 120 | L 119 |
| 8 | Lui Cyc Wash / 1Kw | STG 4C | 1 | 121 | 121 | L 106 |
| 8 | Lui Cyc Wash / 1Kw | | 2 | 122 | 122 | L 139 |
| 8 | Lui Cyc Wash / 1Kw | | 3 | 123 | 123 | L 119 |
| 9 | Lui Cyc Wash / 1Kw | | 4 | 124 | 124 | L 106 |
| 9 | Lui Cyc Wash / 1Kw | | 5 | 125 | 125 | L 139 |
| 9 | Lui Cyc Wash / 1Kw | | 6 | 126 | 126 | L 119 |
| 10 | | STG 4D | 1 | | | |
| 11 | | | 2 | | | |
| 12 | | | 3 | | | |
| 13 | Lui Cyc Wash / 1Kw | | 4 | 130 | 130 | L 106 |
| 13 | Lui Cyc Wash / 1Kw | | 5 | 131 | 131 | L 139 |
| 13 | Lui Cyc Wash / 1Kw | | 6 | 132 | 132 | L 119 |
| 14 | Lui Cyc Wash / 1Kw | | 4 | 130 | 130 | L 106 |
| 14 | Lui Cyc Wash / 1Kw | | 5 | 131 | 131 | L 139 |
| PS 14 | Lui Cyc Wash / 1Kw | | 6 | 132 | 132 | L 119 |

Standard Lx Rig / Patching FOH / House Lights

| Lamp No. | Lamp Type | Loom | Circuit | Dimmer | Channel | Colour |
|----------|-----------------------|-------|---------|--------|---------|-------------|
| Prompt 1 | Par Can 64 240v 1000W | HLx 1 | 1 | 1 | 1 | L 228 FROST |
| 2 | Par Can 64 240v 1000W | | 2 | 1 | 2 | L 228 FROST |
| 3 | Par Can 64 240v 1000W | | 3 | 2 | 3 | L 228 FROST |
| 4 | Par Can 64 240v 1000W | | 4 | 2 | 4 | L 228 FROST |
| 5 | Par Can 64 240v 1000W | | 5 | 3 | 5 | L 228 FROST |
| 6 | Par Can 64 240v 1000W | | 6 | 3 | 6 | L 228 FROST |
| 7 | Par Can 64 240v 1000W | HLx 2 | 1 | 4 | 7 | L 228 FROST |
| 8 | Par Can 64 240v 1000W | | 2 | 4 | 8 | L 228 FROST |
| 9 | Par Can 64 240v 1000W | | 3 | 5 | 9 | L 228 FROST |
| 10 | Par Can 64 240v 1000W | | 4 | 5 | 10 | L 228 FROST |
| 11 | Par Can 64 240v 1000W | | 5 | 6 | 11 | L 228 FROST |
| 12 | Par Can 64 240v 1000W | | 6 | 6 | 12 | L 228 FROST |
| 13 | Par Can 64 240v 1000W | HLx 3 | 1 | 7 | 13 | L 228 FROST |
| 14 | Par Can 64 240v 1000W | | 2 | 7 | 14 | L 228 FROST |
| 15 | Par Can 64 240v 1000W | | 3 | 8 | 15 | L 228 FROST |
| 16 | Par Can 64 240v 1000W | | 4 | 8 | 16 | L 228 FROST |
| 17 | Par Can 64 240v 1000W | | 5 | 9 | 17 | L 228 FROST |
| 18 | Par Can 64 240v 1000W | | 6 | 9 | 18 | L 228 FROST |
| 19 | Par Can 64 240v 1000W | HLx4 | 1 | 10 | 19 | L 228 FROST |
| 20 | Par Can 64 240v 1000W | | 2 | 10 | 20 | L 228 FROST |
| 21 | Par Can 64 240v 1000W | | 3 | 11 | 21 | L 228 FROST |
| 22 | Par Can 64 240v 1000W | | 4 | 11 | 22 | L 228 FROST |
| 23 | Par Can 64 240v 1000W | | 5 | 12 | 23 | L 228 FROST |
| OP 24 | Par Can 64 240v 1000W | | 6 | 12 | 24 | L 228 FROST |

Sound Consoles / Equipment

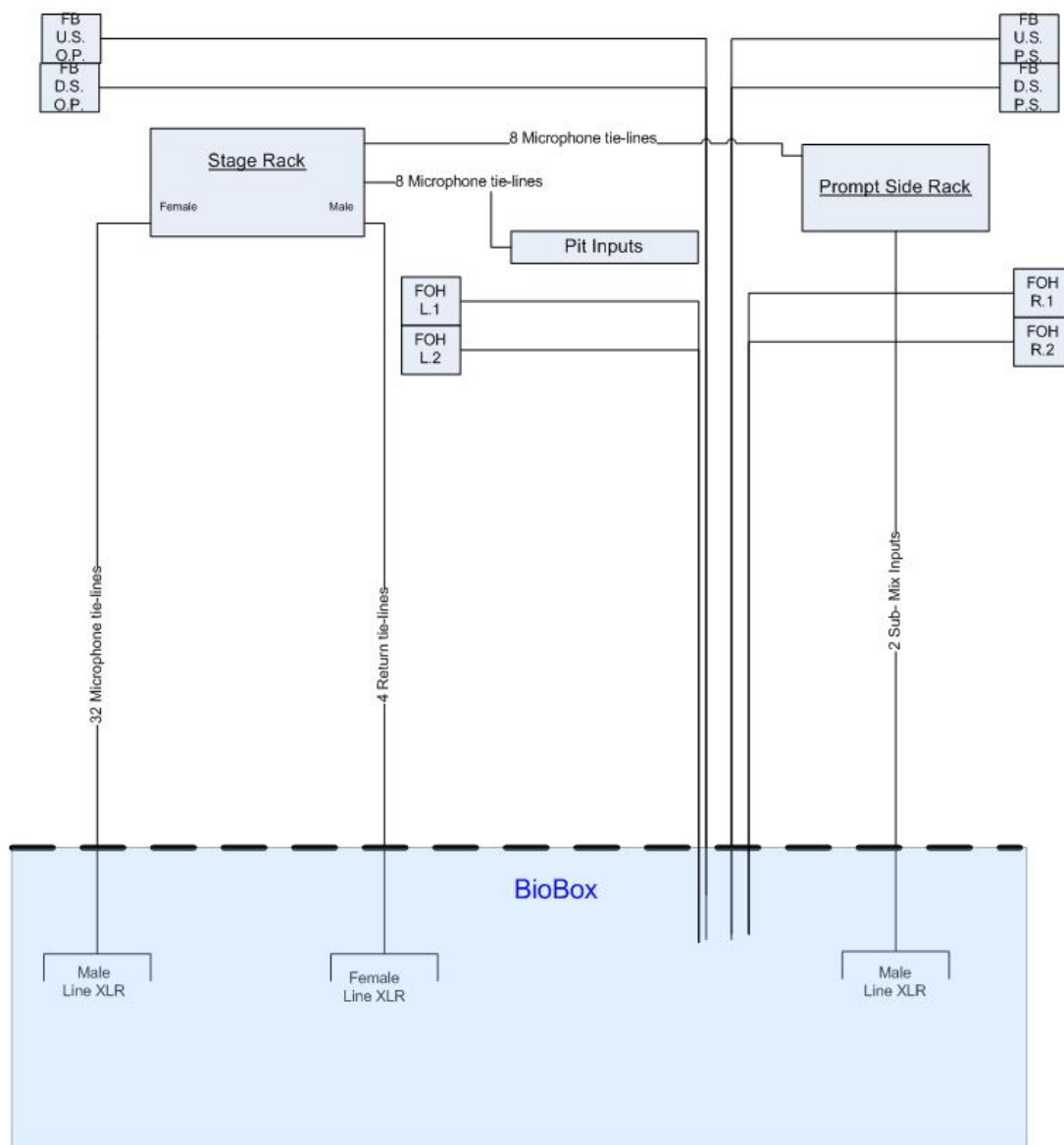
| | | |
|---------------------------------------|--|---------------------------------|
| Bio Box Mixing Equipment: | 1 x Allen&HeathGL2400-32 Chanel 2 x Denon DN-625 | (Mixing console) (CD player) |
| System Processor: | 1 x Meyer Sound Galileo processor | |
| System EQ: | 1 x dbx 2231 dual 1/3 Octave EQ with limit | |
| Effects Processor: | 1 x Lexicon MPX1 | |
| On-Stage Mixing Equipment: | 1 x Yamaha MG16/6FX 1 x Yamaha CDX397 | (Mixing console) (CD player) |
| Speakers (FOH): | 2 x Meyer CQ 1 (Prompt / O. Prompt Pros. Arch) 2 x Meyer UPJ -1P (Prompt / O. Prompt Pros. Arch) | |
| Speakers (On Stage Fold back): | 4 x Meyer UPJ -1P (Prompt / O. Prompt wings) 2 x Proel "Flash 12A" Active speakers: 12" @ 200W. | |
| Multi-core and Patching: | Terminates in DS/OP 32 x XLR Microphone lines to Bio-Box 4 x XLR Returns from Bio-Box 8 x XLR Tie-lines from Orchestra Pit 8 x XLR Tie-lines from DS. Prompt | |
| Other Equipment: | 1 x Denon DN-T625 CD/ Tape 7 x Shure SM58 mic 3 x Shure SM57 mic 8 x Beyer-dynamic GST400 mic stands 4 x DI-2 mark #3 2 x Shure SLX2- SM 58 Hand-held radio microphones Lavalier accessories also available. | |
| Talkback System: | 1 x Eizicom 200 Master Station (in Prompt Corner). 5 x Eizicom 100 belt-packs 6 x Beyer-dynamic DT-109 Headset Patches in Bio, Prompt and O.P. Wings, | |
| Portable System: | 1 x Spirit Mixing Console 2 x JBL EON10G2 2 x Speaker Stand 1 x Microphone Stand 2 x CD Player 1 x Shure SM58 Microphone | |
| Microphone Cabling | 5 x 3 Mtr Mic cables XLR M -XLR F 5 x 5 Mtr Mic cables XLR M -XLR F 10 x 10 Mtr Mic cables XLR M -XLR F 10 x 15 Mtr Mic cables XLR M -XLR F 1 x 15 Mtr Multicore Loom 12 Snds / 4 rtn | |

Standard Sound Rig

Stage Multicore

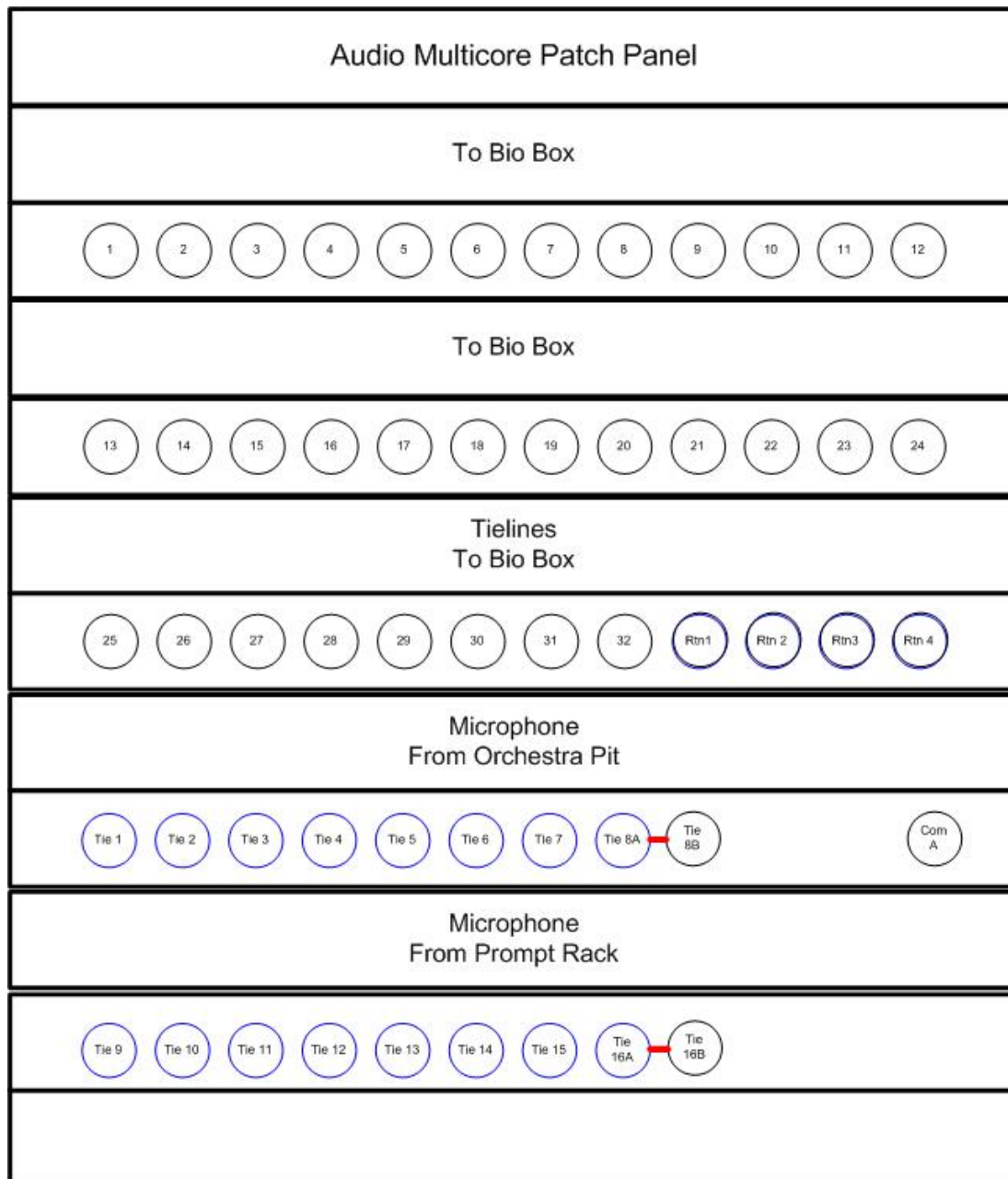
All terminations with 3 pin XLR.

Block Diagram



Standard Sound Patching

Multicore Patch Rack



| Muticore Cable Assignment | | | |
|----------------------------------|-------------|-----------|--------------------------|
| CABLE | PAIR | ID | DESCRIPTION |
| Belden 20 Way | | | <i>OP rack to BioBox</i> |
| | 1 | M1 | Multicore Channel |
| | 2 | M2 | Multicore Channel |
| | 3 | M3 | Multicore Channel |
| | 4 | M4 | Multicore Channel |
| | 5 | M5 | Multicore Channel |
| | 6 | M6 | Multicore Channel |
| | 7 | M7 | Multicore Channel |
| | 8 | M8 | Multicore Channel |
| | 9 | M9 | Multicore Channel |
| | 10 | M10 | Multicore Channel |
| | 11 | M11 | Multicore Channel |
| | 12 | M12 | Multicore Channel |
| | 13 | M13 | Multicore Channel |
| | 14 | M14 | Multicore Channel |
| | 15 | M15 | Multicore Channel |
| | 16 | M16 | Multicore Channel |
| | 17 | M17 | Multicore Channel |
| | 18 | M18 | Multicore Channel |
| | 19 | M19 | Multicore Channel |
| | 20 | M20 | Multicore Channel |
| Belden 12 Way A | | | <i>OP rack to BioBox</i> |
| | 1 | M21 | Multicore Channel |
| | 2 | M22 | Multicore Channel |
| | 3 | M23 | Multicore Channel |
| | 4 | M24 | Multicore Channel |
| | 5 | M25 | Multicore Channel |
| | 6 | M26 | Multicore Channel |
| | 7 | M27 | Multicore Channel |
| | 8 | M28 | Multicore Channel |
| | 9 | M29 | Multicore Channel |
| | 10 | M30 | Multicore Channel |
| | 11 | M31 | Multicore Channel |
| | 12 | M32 | Multicore Channel |

| Muticore Cable Assign Continued | | | |
|--|-------------|-----------|-----------------------------|
| CABLE | PAIR | ID | DESCRIPTION |
| Belden 12 Way B | | | <i>OP rack to Bio Box</i> |
| | 1 | Rtn 1 | Return Line 1 |
| | 2 | Rtn 2 | Return Line 2 |
| | 3 | Rtn 3 | Return Line 3 |
| | 4 | Rtn 4 | Return Line 4 |
| | 5 | S.Mix1 | Stage Mix Auditorium |
| | 6 | S.Mix2 | Stage Mix Fold-back |
| | 7 | P.R. | Program Relay |
| | 8 | Aud.P. | Auditorium Paging |
| | 9 | | |
| | 10 | | |
| | 11 | | |
| | 12 | Coms | Coms Loop 2 |
| Belden 12 Way C | | | <i>OP rack to Orchestra</i> |
| | 1 | Tie 1 | Microphone tie-line |
| | 2 | Tie 2 | Microphone tie-line |
| | 3 | Tie 3 | Microphone tie-line |
| | 4 | Tie 4 | Microphone tie-line |
| | 5 | Tie 5 | Microphone tie-line |
| | 6 | Tie 6 | Microphone tie-line |
| | 7 | Tie 7 | Microphone tie-line |
| | 8 | Tie 8 | Dual sex tie-line |
| | 9 | | |
| | 10 | | |
| | 11 | | |
| | 12 | Coms | Coms Loop 1 |

Stage Manager / Dressing Rooms / Miscellaneous**Stage Manager Console:** (Positioned in Prompt Wing)

Talkback Master Station
Flat screen Stage monitor

House Light Control:

Wall Panels with 10 preset settings
1 x Stage Managers Console
1 x Bio Box

Dressing Room # 1:

Seats approx. 8 – 10 persons
Mirrors / counter / sink / costume racks
Program sound / paging / flat screen Stage monitor
Toilets / shower

Dressing Room # 2:

Seats approx. 10 - 12 persons
Mirrors / counter / sink / costume racks
Program sound / paging / flat screen Stage monitor
Toilets / shower

Disabled Toilet:

Male / Female toilet
Adjacent to Dressing Rooms

Green Room:

Adjacent to Dressing Rooms
Tea making facilities
Refrigerator / sink / microwave
Program sound / paging / flat screen Stage monitor

Piano:

Make: Bechstein
Model C
Size 9' Tuned to A440 unless otherwise specified.

Ladders:

1 x Branach fibreglass step platform 1.8 meters (platform height)
1 x Branach fibreglass step platform 3.6 meters (platform height)

Audio Visual.

Data Projectors: 1 x Ben-Q, MP-624, DLP. 3000ansi
 1 x Panasonic, PT-LB80, LCD. 3200ansi

Projection Screens: 1 x Draper, Diplomat Tripod Screen 175cm x 234cm (6' x 7')
 1 x Draper, Universal Folding Screen 274cm x 366cm (12' x 9')
 1 x Draper, Universal Rear Projection Screen
 1 x Draper, Universal Front Projection Screen
 1 x Set of Draper Universal Dress Kit (Black)

AV Accessories: 1 x Catlink, VGA to Cat-5 Converter
 1 x Image, Projector stand - adjustable
 1 x 10m, VGA Cable
 3 x 2m, VGA Cable
 1 x 20m Cat- 5 Cable
 1 x 20m HDMI cable
 2 x 5m Cat-5 Cables

CCTV Block Diagram

